



A Discussion with the Housing Authority

Green Phase: A First Look

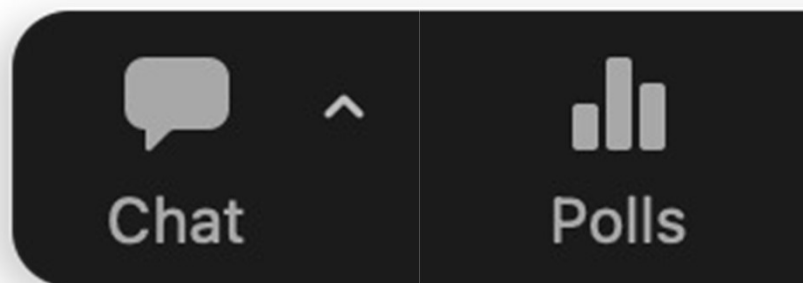
March 28, 2024





Interactive Zoom Features

- **Polls:** Polls will be used to gather and share your responses to our questions
- **Chat:** We encourage you to share more details about your responses in the chat so we can learn more about your perspective





Group Agreements



Participate with
intention



Appreciate the
diversity of
perspectives



Maintain a
respectful space





Public Comment Guidelines



Use the “Raise my Hand” feature to comment on a topic



When you are called on, the host will allow you to unmute



Limit comments to one minute or less





Agenda



6:00PM to 6:10PM | **Welcome and Agenda Review**



6:10PM to 6:20PM | **Current Conditions and Project Overview**



6:20PM to 6:25PM | **Feedback Summary**



6:25PM to 6:55PM | **Proposed Design & Request for Feedback**



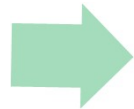
6:55PM to 7:00PM | **Questions and Comments**





Current Conditions and Project Overview

Repositioning Plan Timeline



Planning (ongoing)

- Research
- Community Engagement
- Site plan & design

Pre-Development (2024-2030)

- Acquire funding
- City permitting & approval
- Materials & labor

Development (2025-2035)

- Construction

Housing Authority of the City of Eureka

*“Green Phase”
3230 Hiler Street*



How does Green Phase fit into the larger plan?



**Current
Conditions:
View from
Everding
Street (Looking
South)**





**Current Conditions:
View from Burrill Street (Looking North)**



**Current Conditions:
View from Hiler Street (Looking North)**



**Current Conditions:
View from Hiler Street (Looking West)**



Checkpoint: Current Conditions and Project Overview



Use the “Raise my Hand” feature to comment on Current Conditions and Project Overview



When you are called on, the host will allow you to unmute



Limit comments to one minute or less

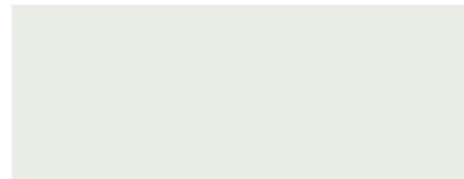




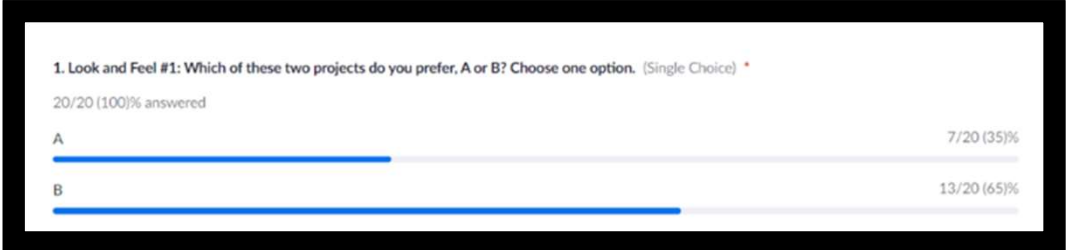
Feedback Summary

Feedback Summary

- HACE held a community meeting on March 6, 2024 and requested design and amenity feedback



Look & Feel #1

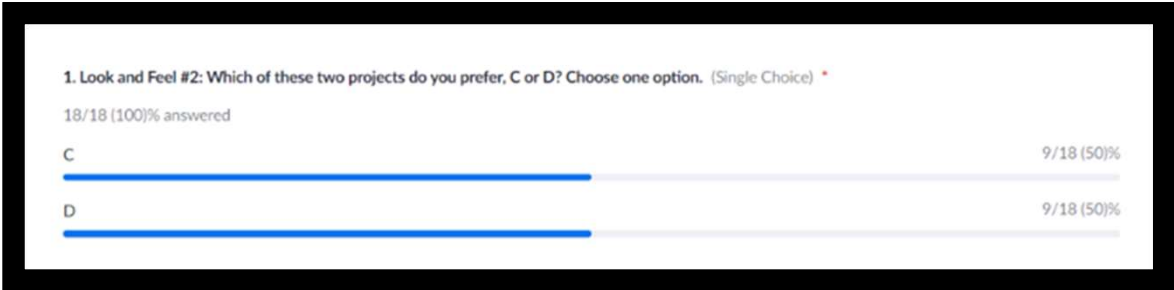


A

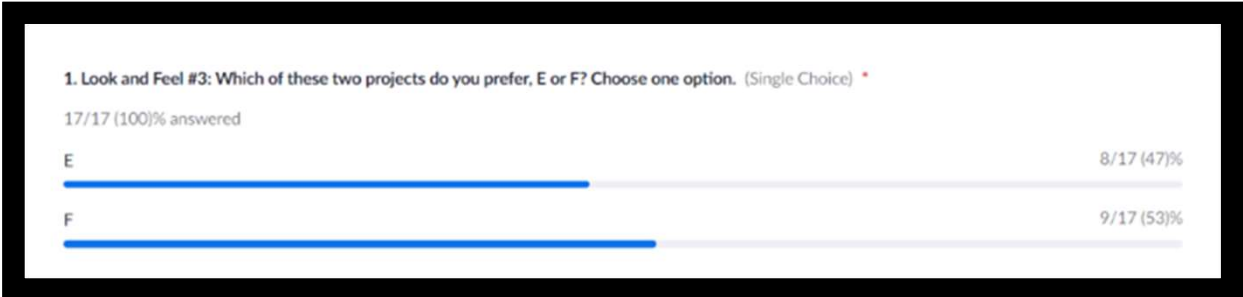


B

Look & Feel #2



Look & Feel #3



Participants asked that designs emulate the historical look of the community



PITCHED ROOF

ROOF EAVES



525 W. Harris Street

COMPOSITE SHINGLES

CLAPBOARD SIDING

ENTRIES



715 Stewart Street

Poll Question 6

Which of the following features do you think are most important to include in this project? (choose all that apply):

- a. Outdoor lighting
- b. Secure entry to units
- c. Accessibility options
- d. Storage for bikes and more
- e. Other: (write in chat)

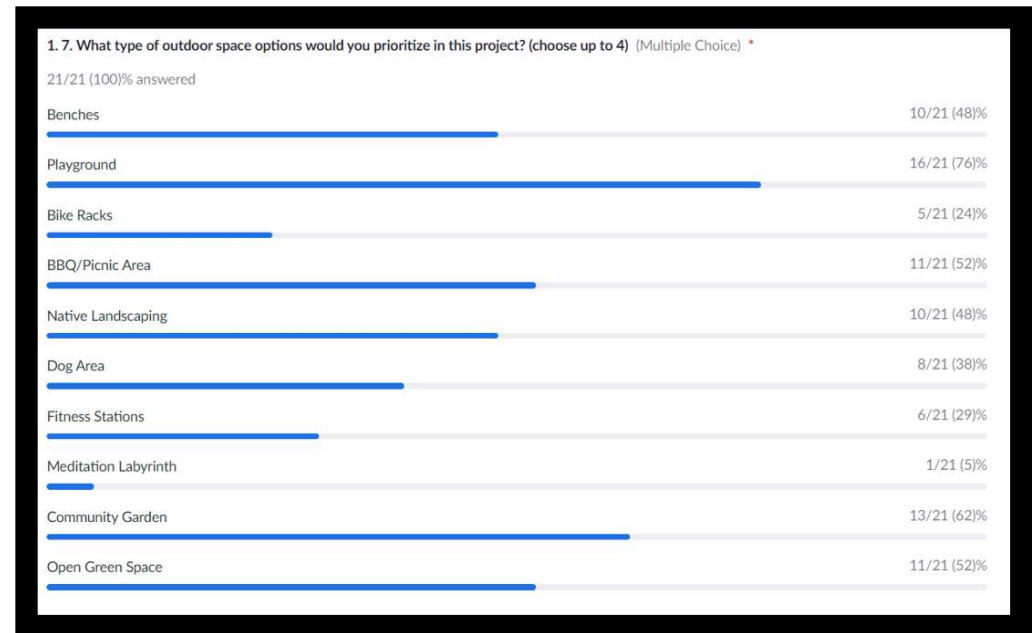




Poll Question 7

What type of outdoor space options would you prioritize in this project? (choose up to 4)

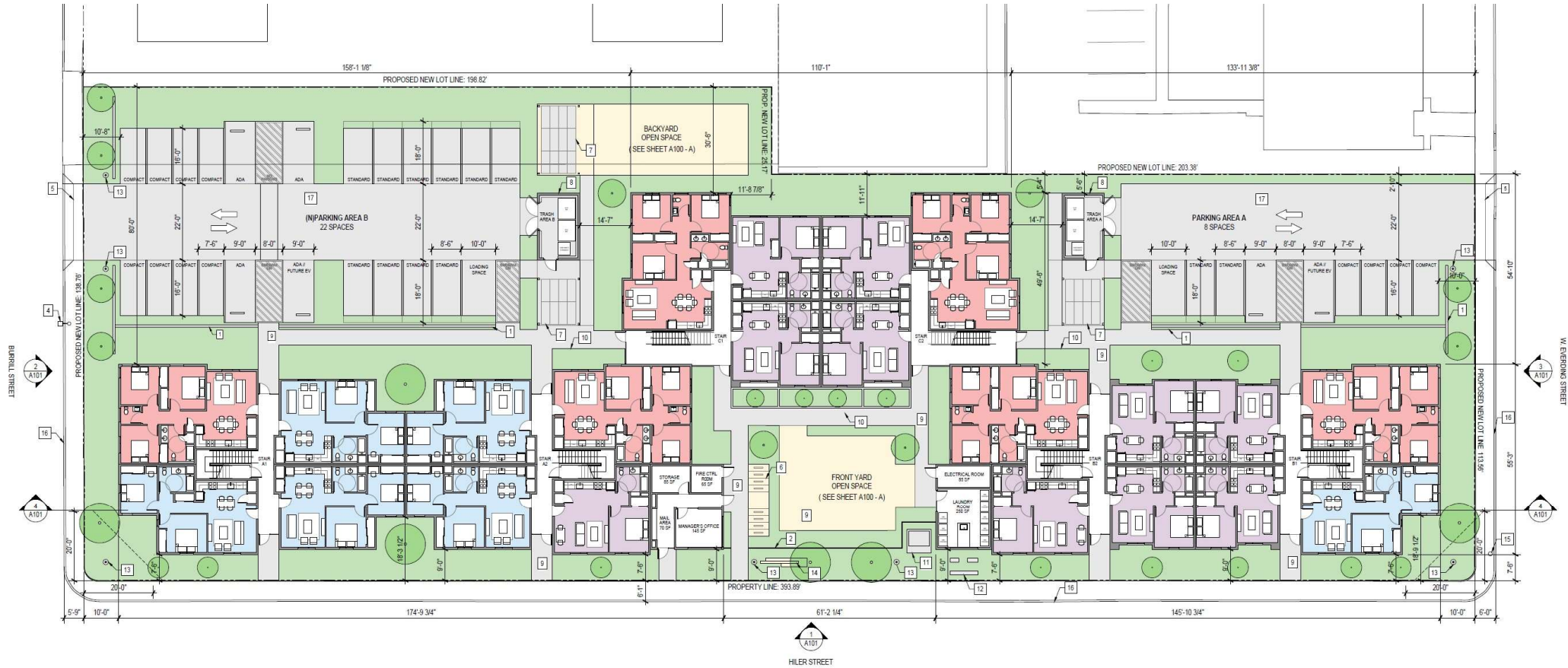
- a. Benches
- b. Playground
- c. Bike racks
- d. BBQ/Picnic area
- e. Native landscaping
- f. Dog area
- g. Fitness stations
- h. Meditation labyrinth
- i. Community garden
- j. Open green space



Project Design Overview



Site Plan



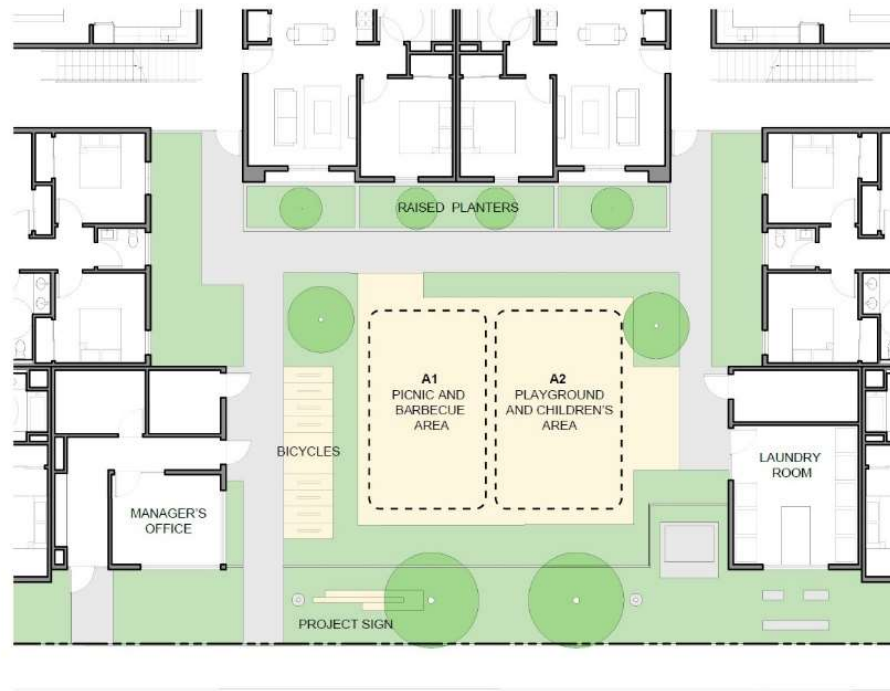
Outdoor Amenities



A1 - PLAYGROUND AND CHILDREN'S AREA



A2 - PICNIC AND BARBECUE AREA



Front Yard Outdoor Amenity Space

Outdoor Amenities



B1 - GARDEN AREA



B2 - OPEN GREEN SPACE



Back Yard Outdoor Amenity Space



Checkpoint: Feedback Summary



Use the “Raise my Hand” feature to comment on the Feedback Summary



When you are called on, the host will allow you to unmute



Limit comments to one minute or less





Unit Mix and Amenities

Green Phase Unit Configuration

- 100% Affordable rentals
- Family development (units not designated for specific population)

Green Phase	Unit Size			Total
	1BR	2BR	3BR	
Existing	4	2	2	8
Proposed	20	12	12	44

Unit Mix and Rent Limits (2023)

Bedrooms	30% AMI	40% AMI	60% AMI	Manager's Unit	Total
1 BR	18	1	1	0	20
2 BR	5	3	4	0	12
3 BR	5	3	3	1	12
Total	28	7	8	1	44

Bedrooms	30% AMI	40% AMI	60% AMI
1 BR	\$464	\$619	\$928
2 BR	\$557	\$743	\$1,114
3 BR	\$643	\$858	\$1,287



Amenities Overview

Amenities

- Enclosed Stair Lobbies
- Community Green Space
- Mail/Package Room
- Community Laundry Room
- Secure access
- Mobility & Accessibility units
- Management office

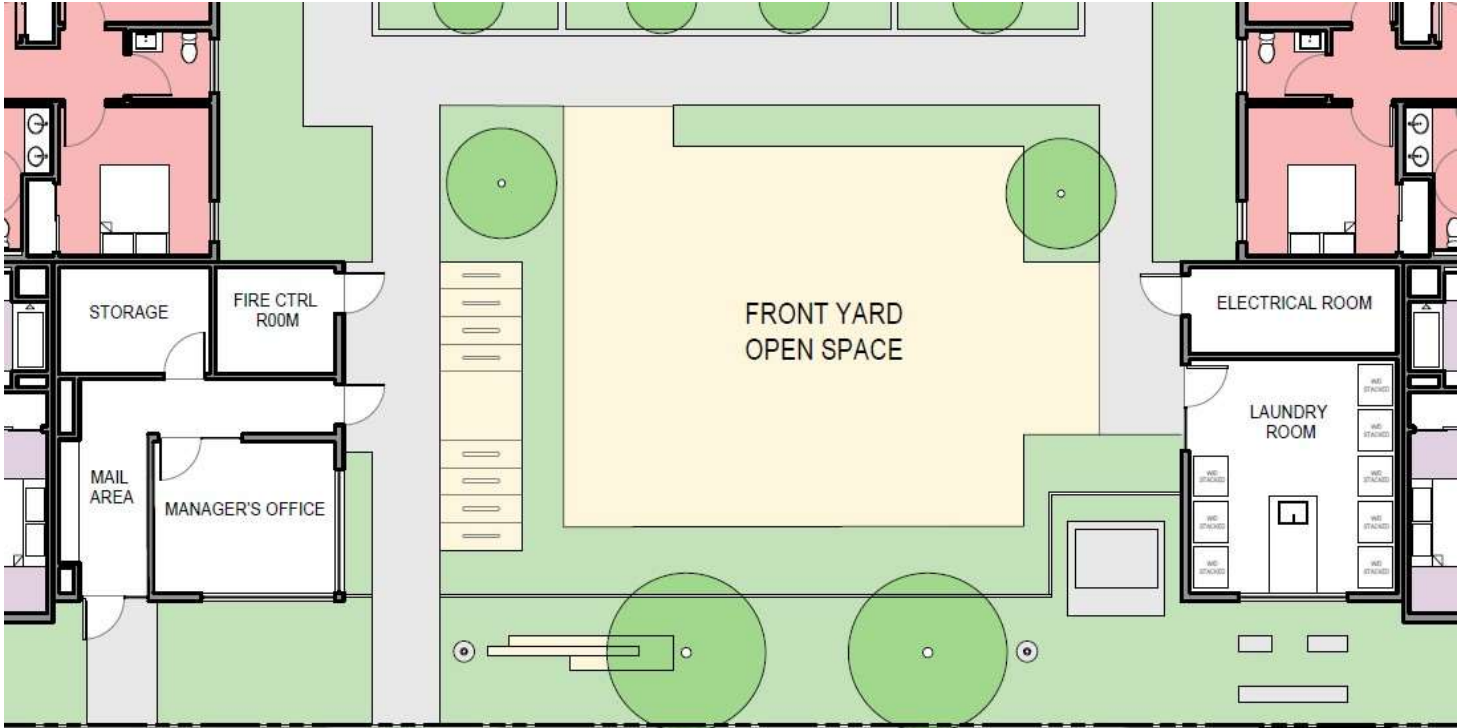
Parking

- Bikes
 - 8 short-term parking spaces
 - 15 long-term parking spaces
- Vehicles*
 - 28 off-street parking spaces (car)

**Existing on-street parking (30 stalls) will remain, for a total of 58 vehicular stalls*



Amenities Overview



Mail/Package Room, Manager's Office, and Laundry Room



Mobility & Accessibility

Units

- 15% (7) of the project units will be mobility units
 - 3 one-bedroom units
 - 2 two-bedroom units
 - 2 three-bedroom units
- 15 adaptable units

Parking

- 6 accessible parking spaces
- 2 Loading Spaces





Checkpoint: Unit Mix and Project Amenities



Use the “Raise my Hand” feature to comment on the Project Amenities



When you are called on, the host will allow you to unmute



Limit comments to one minute or less





Project Design



Project Design Overview



Residential Units and Secured Entries



Front Yard Outdoor Space



Bird's Eye View of Outdoor Space

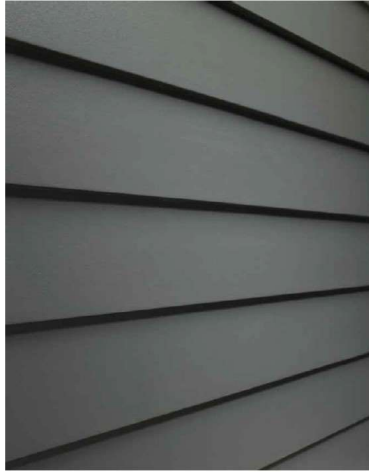


Project Corner View



Reinvigoration of Hiler Street

Proposed Materials



FIBER CEMENT SIDING



COMPOSITE SHINGLE ROOFING



STRAIGHT STACKED CMU RAISED PLANTERS AND PARKING LOT WALLS



FIBER CEMENT SIDING



VERTICAL BLADE METAL FENCE



CYCLONE LIGHTING POST LIGHT



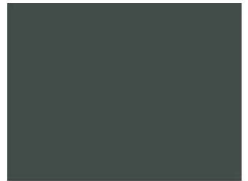
LITHONIA WEDGE WALL SCONCE



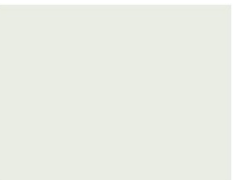
A - MONTEREY TAUPE
BY JAMES HARDIE OR EQUAL



B - BOOTHBAY BLUE
BY JAMES HARDIE OR EQUAL



C - IRON GRAY
BY JAMES HARDIE OR EQUAL



D - ARCTIC WHITE
BY JAMES HARDIE OR EQUAL



Checkpoint: Design



Use the “Raise my Hand” feature to comment on the Project Design



When you are called on, the host will allow you to unmute



Limit comments to one minute or less





Request for Feedback



Request for Feedback

- The following poll will compare two color schemes: one with a lighter color scheme and one with a darker one.
- Please answer the poll question and provide any additional feedback in the chat.



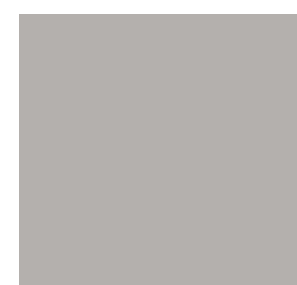
Boothbay Blue



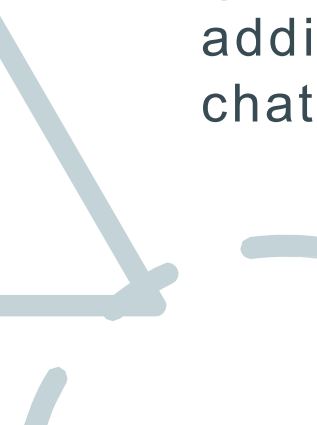
Monterey Taupe



Evening Blue



Pearl Gray





Poll Question 1

- Which of these two color schemes do you prefer, A or B?
What about them do you like or dislike? (write in the chat)



Boothbay Blue, Monterey Taupe, White Accent



Evening Blue, Pearl Gray, White Accent



Checkpoint:

Request for Feedback + General Comment



Use the “Raise my Hand” feature to comment on the [Project Colors or Amenities](#)



When you are called on, the host will allow you to unmute



Limit comments to one minute or less





Thank You!

- Visit our website to stay up-to-date with our progress or provide feedback: www.eurekaumboldttha.org/repositioning
- Request to join our email list by sending an email to: repositioning@eurekaumboldttha.org
- **Thank you for participating!**

