

Relocation Plan for HACE Redevelopment – Green Phase



Prepared for Hiler I LP, Brinshore Development L.L.C & Housing Authority of the City of Eureka

Prepared by LACAL Consulting, Inc.

October 5, 2023

Updated: May 21, 2024; July 30, 2025; January 6, 2026; April 1, 2026, May 19, 2026

Table of Contents

Introduction.....	4
I. Project Location and Description	6
A. Location.....	6
B. Project Description	8
II. Relocation Needs Assessment.....	9
A. Housing Mix.....	9
B. Project Rents.....	9
C. Occupancy and Overcrowding	10
D. Tenant Income Information.....	10
E. Qualified Population and Household Characteristics	10
F. Replacement Housing Needs	10
G. Ethnicity and Household Language	11
H. Household Disabilities and Senior Households	11
III. Housing Resources.....	12
A. Concurrent Displacement	13
IV. Relocation Program	14
A. Program Objectives, Standards and Assurances	14
B. Relocation Advisory Assistance	15
C. Relocation Financial Assistance.....	16
D. Voluntary Permanent Relocation Services.....	17
E. Resident Owned Fixtures.....	18
F. The Relocation Process.....	18
G. Return to Project.....	19
H. Over-Housed Tenants.....	19
I. Post-Occupancy in Overcrowded Units.....	20
J. Relocation Extensions Due to Construction Delays.....	20
K. Termination of Lease During Temporary Relocation	20
L. Record Keeping	20

M. Relocation Tax Consequences	21
N. Grievance Procedures.....	21
O. Eviction Policy	22
P. Immigration Status.....	22
Q. Citizen Rights and Participation.....	22
R. Non-Discriminatory Statement.....	24
S. Project Timing.....	24
T. Estimated Relocation Costs	24
Appendices.....	25
Appendix A.....	26
HACE Redevelopment – Green Phase Property Site Schematic	26
Appendix B.....	28
HUD 2025 Income Limits - County of Humboldt	28
Appendix C.....	29
Qualified Population Summary.....	29
Appendix D.....	30
List of Available Market Units for Rent	30
Appendix E	41
Sample Notices.....	41
Appendix F.....	49
Relocation Budget.....	49
Appendix G.....	51
Public Review and Comments	51

List of Figures

Figure 1: Regional Project Site Setting.....	6
Figure 2: 708 Burrill Street Site.....	7
Figure 3: Aerial View of Project Vicinity.....	7

List of Tables

Table 1: Housing Units and Bedroom Sizes	9
--	---

Introduction

The Housing Authority of the City of Eureka (HACE) is partnering with Brinshore Development L.L.C. (Brinshore or Developer) to preserve and to create additional affordable housing at HACE Redevelopment – Green Phase AKA Park Plus Eight or 3230 Hiler Street which is part of the larger 25-1 property (Project). HACE is a public entity that was formed in 1946 to provide federally subsidized housing and housing assistance to low-income families within the City of Eureka and jointly with the Housing Authority of the County of Humboldt (HACH) to the general Humboldt County area. HACE owns and manages a variety of affordable housing units and HACH administers Section 8 Housing Assistance Vouchers, along with a myriad of supportive service programs for its residents.

HACE is committed to creating and sustaining affordable housing communities and partnerships that inspire self-reliance, growth and optimism. In January 2023 HACE updated their Repositioning Plan with a goal to reposition their traditional public housing units. A move motivated by

- Backlog of capital needs have outpaced the ability of public housing funding to keep pace;
- Operating revenue from public housing is uncertain year-to-year, and in many instances, less than other available options;
- Repositioning public housing can reduce or eliminate administrative requirements and generally ease burdens of operations; and
- Unmet need for affordable housing can be addressed by redeveloping and leveraging public housing assets to provide more housing.

Repositioning means to convert properties owned and operated by public housing authorities to a Section 8 platform. This change can bring more stable and increased revenue to properties. In addition to changing the subsidy type from public housing to Section 8, repositioning can also mean recapitalizing existing properties to address physical needs or redeveloping sites to create a net increase in units. The outcome of repositioning can include the public housing authorities maintaining ownership and control of original properties.

HACE plans to use the U.S. Department of Housing and Urban Development (HUD) Section 18 Disposition program over a series of applications, which will enable HACE to maximize the revenue available to the portfolio by utilizing options for net new Section 8 vouchers for each unit and carry out the desired physical redevelopment plans. Some of the properties do not need significant rehabilitation and/or do not offer an opportunity to increase units. These factors were used to determine which properties are best suited for Preservation or Redevelopment. Here, Preservation means to keep the existing building, convert the subsidy to Section 8, and complete a needed or desired rehabilitation. Redevelopment means to relocate the existing residents, raze the buildings, and develop the property with new and more units than previously were on the site.

For Brinshore and HACE, the residents and their success are the highest priority. They are committed to using any available HUD and private funding as a tool to improve the lives of residents and help them achieve success. The intent of the redevelopment of this property is to improve both the living conditions of residents and their quality of life. To successfully complete the redevelopment, temporary and/or voluntary permanent relocation of all residents will be required. HACE and Brinshore care about the impact this relocation will have on the lives of residents during each construction phase. To that end, this relocation plan conforms with Fair Housing laws and guidance to address the residents' needs during relocation in a manner which disrupts their daily lives as little as possible.

The following relocation plan (Plan) has been prepared for the property known as HACE Redevelopment – Green Phase to be redeveloped with possible assistance of the HUD Section 18 program. Brinshore will utilize this Plan for submission to HUD, HACE, State of California HCD and TCAC's 9% low-income housing tax credit program and other funding agencies, as necessary. The Plan is prepared in conformance with the applicable provisions of the Uniform Relocation Act (46 U.S.C. § 4600 et seq.), its implementing regulations (49 C.F.R. Part 24); as well as the California Relocation Assistance Law, California Government Code Section 7260 et seq. (CRAL) and the California Relocation Assistance and Real Property Acquisition Guidelines, Title 25, California Code of Regulations, Chapter 6, Section 6000 et seq., and HUD Handbook 1378 (Guidelines). The subject of the Plan is the 8-unit Park Plus Eight site being redeveloped by Brinshore. The proposed project includes the demolition of existing 8 units in 3 structures and subsequent construction of 44 housing units on site.

The statutory basis for this Plan arises from the anticipated need to temporarily or permanently displace the households from their Project units for the duration between demolition of existing units and new construction, as well as to identify relocation requirements, special needs and preferences for these households and the relocation assistance program Brinshore and HACE will follow. The Plan is presented in four sections:

Section I: General demographic data and Project description

Section II: Profile of tenants who may be affected

Section III: Description of available housing resources

Section IV: Description of the relocation assistance program

The Plan has been prepared by LACAL Consulting, Inc. (LACAL). The LACAL office is located at 6728 Fair Oaks Boulevard, Suite 400C, in Carmichael, California. LACAL maintains a toll-free number (800)345-5520 which is attended Monday through Friday, between 9 a.m. and 5 p.m. PST.

I. Project Location and Description

A. Location

The Project is located on Hiler Street in the City of Eureka and County of Humboldt, generally between Burrill Street to the south, West Everding Street to the north, Hiler Street to the east and Prospect Avenue to the west. The apartments associated with the Project are located immediately next to the HACE offices, less than half a mile east of State Route 101, and less than a mile to the Humboldt Bay. (see Figure 1 for Regional Location Setting, Figure 2 for Specific Site Location and Figure 3 for Aerial Project View). Additional site plans/maps are provided in **Appendix A**.

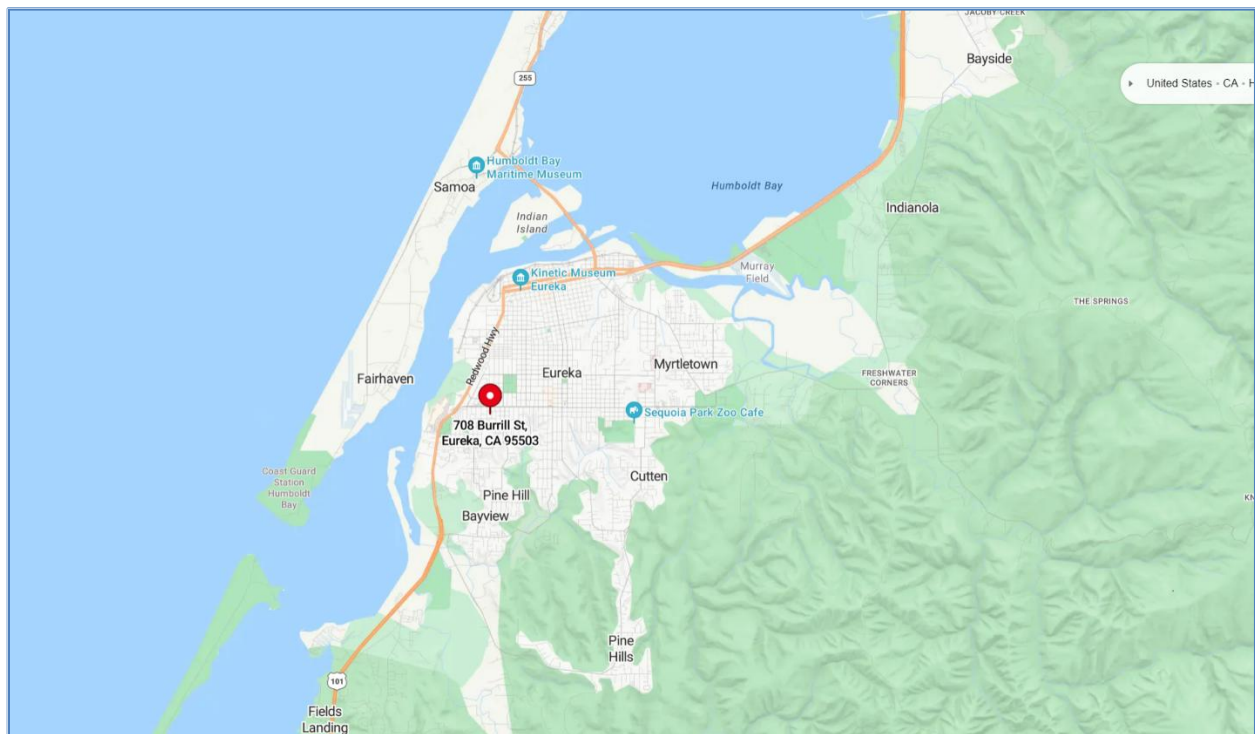


Figure 1: Regional Project Site Setting

The property is situated in a predominantly residential neighborhood, with Highland Park to the south and Da ‘Yas Park to the north of the community. Immediately adjacent to the south is Calvary Lutheran Church, Alice Birney Elementary School, and service providers, shops, and eateries along West Harris Street. The property is served by Humboldt Transit Authority’s bus lines: green, gold, red and rainbow with a stop at Harris/Elizabeth and Harris/Central.

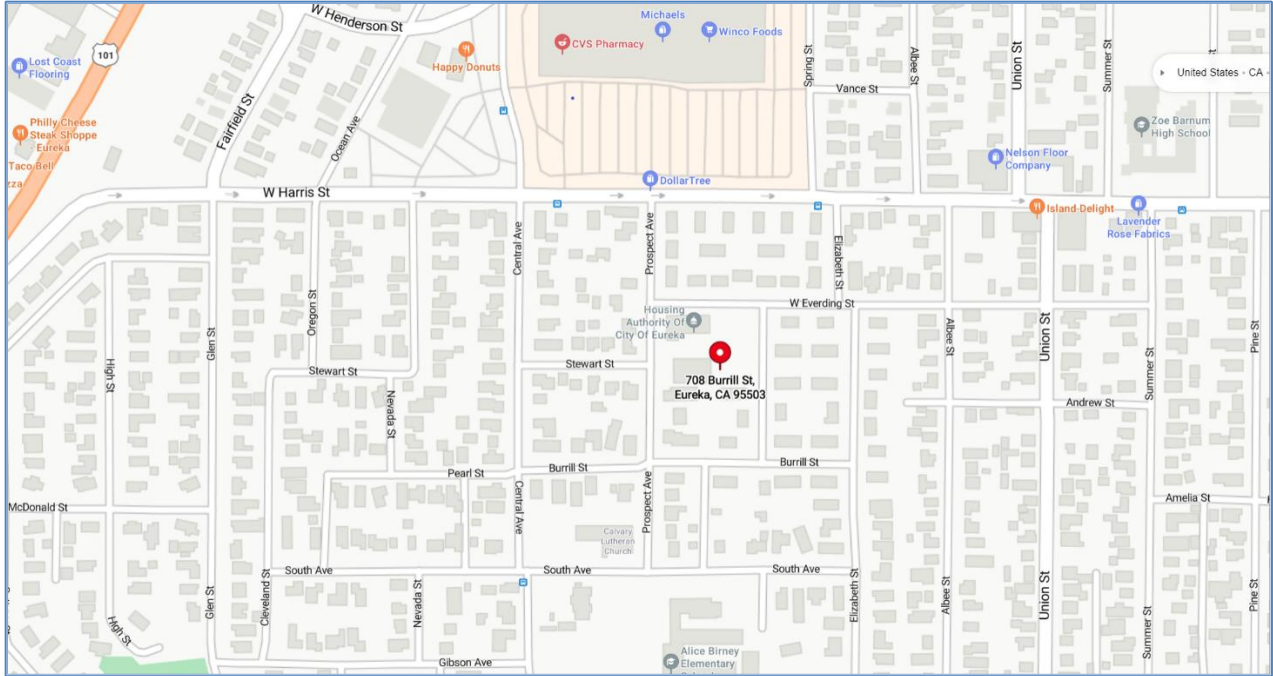


Figure 2: 708 Burrill Street Site

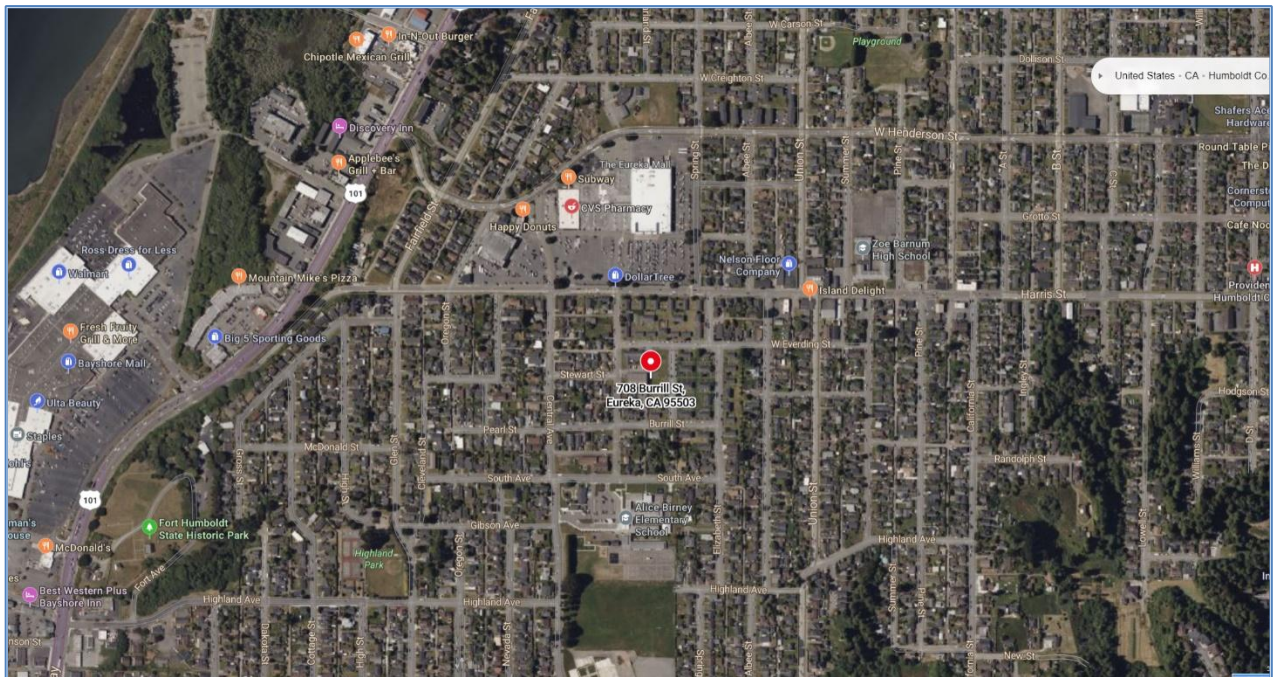


Figure 3: Aerial View of Project Vicinity

B. Project Description

HACE and Brinshore intend to redevelop the Project as a single phase (all 8 units will be razed) New Construction, returning 44 units back onsite. Of the 44 new units, 43 new units will be affordable to households earning between 30% and 60% of the median income, and 1 unit is reserved for onsite manager. The new development proposes a total of 20 one-bedroom units, 11 two-bedroom units, and 12 three-bedroom units. The Project will include family housing, accommodating all household sizes in modern-amenities units of one-, two-, and three-bedrooms.

Projected construction improvements are expected to occur starting in December 2026 and are expected to take approximately 20 months. The projected displacement timeline is as follows:

- General Information Notices: March 9, 2026
- Personal Tenant Interviews: March 12 – 17, 2026
- Relocation Plan Update, 30-Day Public Review: April 9 – May 9, 2026
- 90-Day Notices to Vacate: June – July 2026
- 30-Day Notices to Vacate: September – October 2026
- Displacement/Move-Out: October – November 2026
- Construction Period: December 2026 – August 2028 (approximately 20 months)
- Return to New Units (for those exercising right to return): September – October 2028

Construction activity will involve full demolition of existing buildings and temporary or permanent relocation of current tenants to another HACE-owned property or off-site with Tenant Based Section 8 Voucher.

Each unit will feature a fully equipped kitchen with appliances including refrigerator, stove, and oven, bathroom fixtures and finishes, energy efficient lighting and windows, floor and window coverings, and central heating/air conditioning.

A detailed construction schedule is still under development. Architectural drawing of the proposed new site is presented in **Appendix A**.

II. Relocation Needs Assessment

This Plan provides the results of a needs assessment survey, their incorporation into the planning process, and details of proposed joint HACE/Brinshore relocation program. This Plan sets forth policies and procedures necessary to conform to federal and state statutes and regulations for temporary and voluntary permanent residential displacements.

To obtain information necessary for the implementation stage of this Plan, interviews have been conducted with the current residents on the Project site in March 2026. Inquiries made of the occupants included household size and composition, ages of occupants, rental and income information, length and type of occupancy, ethnicity, primary language in the home, disabilities, health problems, identification of other special needs and preferences related to replacement housing and location. Additional project information for this Plan was provided by HACE and Brinshore. There are currently 7 occupied and 1 vacant unit within the Project.

A. Housing Mix

The property consists of 7 occupied units and 1 vacant as follows: 4 one-bedroom units, 2 two-bedroom units, and 2 three-bedroom units. There is currently 1 vacant two-bedroom unit.

Table 1: Housing Units and Bedroom Sizes

No. of Bedrooms	One	Two	Three
No. of Units	4	2	2

B. Project Rents

Currently all 7 occupied households pay rent based on their income. Rents range from \$80.00 to \$728.00. It is HACE/Brinshore intent to relocate all tenants to another HACE property where they will continue paying rents based on their income. All units will be affordability restricted and all households in the Project must qualify for Section 8 Housing and as such will only be required to pay 30% of their household income. If there are no HACE available units at the time of relocation, HACE will secure HACH administered Tenant Based Section 8 Vouchers to allow relocation to market rent apartments while tenants will still pay 30% of their household income for rent.

C. Occupancy and Overcrowding

The Project site consists of 17 individuals, 10 adults and 7 minor children, among 7 interviewed households. The average household size is 2.4 persons per unit.

HACE/Brinshore intend to follow TCAC occupancy standards which allow up to 3 people in a one-bedroom apartment, up to 5 people in a two-bedroom apartment and up to 7 people in a three-bedroom apartment.

Any household placed in a unit size different from that defined in these Occupancy Standards shall agree to transfer to an appropriate size unit at the same property when one becomes available. Once an appropriate size unit is offered to the family/household, they have 30 days to complete the transfer or lose their subsidy.

D. Tenant Income Information

Income information for all Project households was provided by HACE. Five of the 7 households are at 30% area median income, and 2 households are at 50% area median income. All 7 tenant households meet CTCAC income eligibility requirements and will not receive a rent increase exceeding 5%. The income levels for Humboldt County adjusted for family size as published by the California Department of Housing and Community Development (HCD), on April 23, 2025 are presented in **Appendix B**.

E. Qualified Population and Household Characteristics

The detailed household information and qualified characteristics for all 7 Project households are listed in **Appendix C**.

F. Replacement Housing Needs

For relocation activities, HACE and Brinshore will take into consideration individual household preferences and needs to be close to public transportation, employment, schools, medical/public/social services and agencies, recreational services, parks, community centers, and/or shopping and will accommodate all Green Phase households by moving to another right size HACE apartment or off-site with a Section 8 Voucher. It is anticipated that the demolition/new construction timing of temporary relocation will exceed 12 months and all households will be counseled of their rights to claim permanent relocation benefits at that time. It is HACE and Brinshore's goal to ensure that all current residents who relocate for 20 months during construction are able to return to the newly constructed right-size units at Green Phase. If the right sized unit is

not available or tenant prefers to move off-site with a Section 8 Voucher, HACE and Brinshore will accommodate such requests during relocation. For tenants who prefer to accept HACH issued Tenant Section 8 Voucher and permanently relocate from the Project, full relocation assistance for permanent replacement housing will be available. LACAL relocation consultants will ensure that any household requiring reasonable accommodation due to disability is not issued a 90-day notice to vacate until a suitable, ADA-compliant replacement unit is available for them. HACE/Brinshore pledge to provide support in situations where landlord is unable to provide certain ADA required accommodations to house displaced households in safe and secure housing.

G. Ethnicity and Household Language

The ethnic distribution in the Project is 85.7% Caucasian and 14.3% Asian; and English is the primary language for all Caucasian households; the Asian household reported their primary language as Laotian.

Relocation assistance information and counseling will be provided in the primary language of the Project occupants, to assure that all occupants obtain a complete understanding of the relocation program and eligible benefits.

H. Household Disabilities and Senior Households

Senior household is defined as a household with a head of household or spouse who is 62 years or older. There are 3 (42.8%) senior households among the occupied units in the Project, and 3 (42.8%) households reported members with a disability or a handicap. The reported disabilities are: a household member who has suffered a stroke, another household has a member who requires knee surgery and has limited mobility and another household member has limited mobility. The presence of disabilities will be considered at the time of displacement to the extent it may affect the physical move and necessary accommodation. HACE and Brinshore pledge to provide appropriate special care and support for households requiring additional assistance due to disabilities.

III. Housing Resources

The Project may result in permanent relocations, based on the length of construction necessitating temporary relocation which will exceed 12 months, and while current tenants will have an option to return to the newly constructed apartments at the site, they will need to income qualify and qualify for the type of housing that will be constructed. Green Phase will be family housing and therefore most current tenants will qualify for family or non-age restricted units. HACE has 195 units in their portfolio with approximately 8 units that are either currently vacant or anticipated to be vacant in the next 120 days. Those vacancies correspond with the unit sizes of the displaced. Should any of the 7 occupied households require units specifically designed or adapted to meet the needs of elderly and disabled households, HACE portfolio includes the following:

- Wheelchair-accessible units: 10
- Units with grab bars and accessible bathroom features: 10
- Ground-floor/single-story units suitable for mobility-impaired residents: 10
- Units with visual/hearing accommodations: 0

For any household requiring ADA-compliant or specially adapted housing, HACE and Brinshore commit to:

- Identifying appropriate replacement housing within the HACE portfolio that meets the household's specific accessibility needs.
- If no suitable HACE unit is available, provide a Tenant Based Section 8 Voucher with housing search assistance focused on accessible units in the Eureka/Humboldt County market.
- Ensuring that relocation consultants will not issue 90-day notice to vacate to any household requiring reasonable accommodation due to disability until a suitable, ADA-compliant replacement unit has been identified and is available.
- Providing additional moving assistance as needed, including specialized moving services for medical equipment or mobility devices.

The available units survey in **Appendix D** includes units of various sizes; accessibility features of available market units will be verified during housing search assistance for any household with accessibility needs.

Based on the available housing survey conducted and given that HACE maintains a portfolio of 195 units with approximately 8 units currently vacant or anticipated to become vacant within 120 days, there is adequate comparable replacement housing available to meet the relocation needs of all 7 households to be displaced from the Green Phase project. Specifically:

- All 7 households will be offered relocation to another HACE unit of appropriate size, or

- All 7 households will receive a HACH-administered Tenant Based Section 8 Voucher enabling relocation to market-rate housing while continuing to pay income-based rent.

Last Resort Housing Payments are not anticipated to be necessary for this project. However, should circumstances change such that comparable replacement housing becomes unavailable, HACE and Brinshore will provide Last Resort Housing Payments in accordance with applicable regulations, which may be provided as either lump sum or installment payments at the election of the displaced household.

A. Concurrent Displacement

There are 2 other HACE/Brinshore projects anticipated to be undergoing complete renovation or new construction at the same time as the Green Phase; they are HACE/Brinshore's Blue Phase and Purple Phase projects which will require relocation of 12 households and 4 households, respectively, anticipated to commence at approximately the same time as Green Phase. The timing of the Project will be determined by HACE stock of vacant units; there is no plan to house any of these tenants off-site and without the HUD subsidies. Competition for Section 8 units will likely be a factor and HACE and Brinshore will provide for sufficient planning and possibly longer-than-90-day notices if there should not be enough available units for the tenants to relocate to.

IV. Relocation Program

The relocation program and assistance offered by HACE/Brinshore will conform to provisions of the federal and state law and guidelines, as appropriate.

Clarification Regarding Nature of Displacement

Due to the demolition and new construction nature of this project, and the anticipated construction timeline of approximately 20 months, all displacement under this Plan will exceed the 12-month threshold established in 25 CCR §6044 for temporary relocation. Therefore, all households will be treated as permanently displaced for purposes of relocation benefits and assistance, regardless of whether they intend to exercise their right to return to the newly constructed Green Phase units upon project completion.

Specifically:

- All 7 households will receive permanent relocation benefits as described in this Plan.
- All eligible households will have the right to return to a right-sized unit at the newly constructed Green Phase upon completion of construction.
- Households may voluntarily choose to accept permanent relocation with a Tenant Based Section 8 Voucher and waive their right to return.
- Because displacement will exceed 12 months, no temporary relocation pursuant to 25 CCR §6044 is contemplated under this Plan.

A. Program Objectives, Standards and Assurances

It is HACE/Brinshore's objective to fully inform eligible Project occupants of the nature of the new construction activities, timing, and procedures for obtaining relocation assistance and benefits. In the scope of the relocation, HACE/Brinshore staff and relocation consultants will:

- Determine the needs of each residential household eligible for assistance (in more detail than what is obtained during relocation interviews).
- Provide adequate information and assistance to move temporarily or permanently to a HACE replacement apartment unit and return to the newly constructed Green Phase apartment if tenants choose.
- Provide assistance that does not result in different, or separate treatment due to race, color, religion, national origin, sex, disability, creed, familial status, student status, marital status, sexual orientation, gender identity, age or other arbitrary circumstances.
- Supply information concerning federal and state governmental programs aiding low income or disabled persons.
- Assist each eligible person to complete applications for benefits.
- Make relocation benefit payments in accordance with applicable HUD guidelines.

- Inform all people of HACE/Brinshore’s property management policies including criteria for pursuing tenant evictions.

B. Relocation Advisory Assistance

As a function of the overall relocation assistance program, advisory assistance will be provided to all residents by HACE/Brinshore and contracted relocation representatives. The following services and tasks will be undertaken:

- Each household has been issued a General Information Notice and has been personally interviewed to gather information appropriate to determine needs and preferences regarding the temporary or permanent move to another HACE apartment. Inquiries made of residential occupants by relocation personnel covered the following areas: family size, ethnic background, immigration status, age and health considerations, current employment status, family income, transportation needs, and preferences relative to temporary or permanent replacement housing. LACAL conducted personal interviews with current residents between March 13, 2026 and March 17, 2026. This relocation plan has been updated after the completion of interviews to reflect specific household needs, preferences, and demographic information gathered during the interview process.
- Non-displaced residents will be provided a formal Notice of Non-Displacement. Every current Project household will be provided with a Notice of Non-Displacement and an opportunity to return to the Green Phase upon completion of construction, if they choose to return. However, due to the temporary relocation exceeding the legal limits for temporary relocation (12 months), each household has been counseled with the permanent relocation program options and how such choice will affect their relocation benefits. Sample notices: General Information Notice, Notice of Eligibility, 90-Day Notice, and 30-Day Relocation Plan Review Notice can be found in **Appendix E**.
- As soon as feasible, the relocation representative shall explain the relocation payments and other assistance for which households and individuals may be eligible, including related eligibility requirements and the procedures for obtaining such assistance.
- Assistance will be provided to complete appropriate forms and coordinate moving arrangements. Project displacees will be kept informed of Project timing and receive appropriate notice to prepare for required moves. Claims for compensable expenses associated with the temporary or permanent displacement process will be processed expeditiously.
- Bilingual assistance will be provided, as needed.

C. Relocation Financial Assistance

Relocation benefits will be offered to all Project households displaced in accordance with the URA and the implementing HUD Guidelines, as appropriate. Benefits will be paid to eligible Project households upon submission of required documentation in accordance with approved procedures.

Eligibility requirements and benefit plans will be discussed with all temporary/permanent displacees. During personal interview meetings and follow-up visits, each displacee will be counseled as to available options and the consequences of any choice with respect to housing and potential financial assistance.

- Moving Assistance – Regardless of the type of temporary or permanent relocation required for a Project household, HACE/Brinshore and relocation staff will offer arrangements to move personal property by a third-party mover or based on a room count moving allowance if tenants choose a self-move. The relocation consultants shall be responsible for assuring that any third-party mover provides appropriate insurance to cover all claims resulting from damage incurred to residents' possessions during the move process. Relocation representatives shall provide written information to all residents prior to their move, about the process and time period for filing a claim in the event that any damage occurs.
- Packing Materials and Assistance - All tenants who opt for professional move will be provided with packing materials as needed. Upon request, households will be provided with packing and unpacking assistance. Tenants who choose self-move option will be provided with financial assistance to procure their own packing supplies.
- Storage - No furniture or personal items are to remain in the units. For residents temporarily relocating to an apartment that does not accommodate their furniture HACE/Brinshore will provide a designated storage unit or allow for securing a unit in the public storage facility for the time of relocation.
- If for any reason upon completion of the move back to Green Phase, items in the storage unit are subsequently not claimed by the tenant, the applicable State Law regarding disposition of unclaimed property shall apply and no further compensation for the storage unit will be provided.
- Utility Reconnections – HACE/Brinshore and relocation consultants will coordinate with the appropriate utility companies to transfer utilities from the resident's current unit to their temporary relocation unit and back to their final unit at Green Phase.
- Essential utilities shall include electric, gas, water, sewer, trash disposal, and telephone land lines. Connection fees will only be paid for existing utilities at the level of service in place at the Project unit prior to temporary relocation. If disconnection of utilities results in a demand for a deposit to reconnect utilities, said deposit will be paid by HACE/Brinshore upon reconnection of the utility. However, no payment will be made for past due utility bills prior to commencement of the temporary relocation period.

- Security and Pet Deposits – Existing security and pet deposits at the Project units will be transferred to Brinshore upon closing of the conversion process. Tenants will not be required to pay any additional security or pet deposit for temporary housing units or to return to the Green Phase unit.

D. Voluntary Permanent Relocation Services

Additional services and financial assistance, described below, shall be provided when the relocation time period exceeds 12 months and if the resident chooses to accept the HACE offered Tenant Section 8 Voucher and relocates from the Project voluntarily.

- Additional Relocation Advisory Services – Additional information shall be provided on the options available for voluntary permanent relocation including availability and use of a tenant-based voucher; availability of replacement housing payments; and move assistance in areas outside of Eureka, Humboldt County or even state of California, if desired.
- Housing Search Assistance – Within the City of Eureka transportation services will be provided and a minimum of three comparable replacement housing units will be offered to the residents at the time of eligibility determination. A comparable replacement unit is a unit that meets the HACE occupancy standards and is appropriate to the size of the family. Outside the City of Eureka, housing search assistance shall be limited to verification of a comparable replacement unit based on copies of lease agreements and/or move-in inspections conducted by the corresponding Landlord or Property Management Company.
- Replacement Housing Rental Assistance (RAP) – Replacement housing rental assistance shall be provided for voluntary permanent relocation if Section 8 Voucher is not available or if the market rent exceeds the allowed Section 8 Voucher rent limit and shall be calculated pursuant to the Uniform Relocation Act.
- Replacement housing rental assistance is equal to the difference of the greater of either total tenant payment (tenant rent plus tenant paid utilities) at the Project unit or 30% of monthly adjusted income; and the amount of rent plus tenant paid utilities (pursuant to the applicable voucher utility allowance schedule) at the replacement housing unit. The total rental assistance provided is for a period of 42 months or a maximum of \$7,200.00.
- Tenant Based Vouchers – HACH will provide a tenant-based voucher to all Green Phase households relocating off-site; tenants can choose to return to Green Phase or keep the Section 8 Voucher and reside off-site.
- Security and Pet Deposits – Security deposits for voluntary permanent relocation shall be processed as follows:
 - If utilizing a tenant-based voucher, upon approval of the voucher unit, HACE will pay the full security deposit required by the landlord directly to the landlord. Also

eligible for payment are the fees associated with credit/background checks that the landlord requires.

- If not utilizing a tenant-based voucher, the security and/or pet deposit shall be refunded in full to the tenant upon vacating the Project unit.

E. Resident Owned Fixtures

In all relocation methods, residents are responsible for disconnecting items that they have installed or attached inside or outside of their unit such as ceiling fans, wall-mounted televisions or other electronic devices, and exterior security gates or bars.

Items that have been disconnected and removed from the fixed mounting will be packed and moved with all other furnishings. Items not removed will be considered abandoned and unclaimed and will be removed as part of the demolition and construction work.

Assistance with removing personal items will be provided as needed pursuant to a request for reasonable accommodation.

Personal items removed will be returned to the unit after the construction but may only be reinstalled if permissible under the new lease agreement.

F. The Relocation Process

The general steps that will be required of HACE/Brinshore and the relocation team in implementation of the Relocation Plan:

- The relocation program will be carried out by the relocation consultants and overseen by HACE/Brinshore to ensure consistency in the application of the local policies and state and federal requirements.
- Pursuant to HUD requirements, the General Information Notice (GIN) has been issued by HACE and personally delivered by HACE staff on March 9, 2026. Relocation consultants obtained signatures on GINs during the personal interviews with residents.
- Brinshore and HACE prepared preliminary relocation assumptions and budgets based on current HACE vacancies and construction scope schedules for Green Phase relocation.
- Relocation consultants have conducted assessments of each resident household and developed an individual temporary relocation plan, identified special needs and determined the level of assistance needed for each household. Relocation consultants will enter into a Relocation Agreement or other such document in which tenant acknowledges in writing their understanding of the need for temporary relocation; and their rights and responsibilities during the temporary relocation period including the right to return to the Project upon completion of construction.

- Brinshore and relocation consultants shall secure all necessary third-party services to implement the relocation activities including moving companies, packing materials and transportation services.
- A minimum of 90 days prior to relocation commencement HACE and the relocation representatives shall issue a Notice of Relocation which serves as a Notice of Intent to temporarily relocate them.
- A minimum of 30 days prior to the temporary relocation of each tenant, the relocation consultants shall issue a 30 Day or reasonable Notice to Vacate; the Notice of Non-Displacement or the Notice of Eligibility of URA Relocation, as applicable, which shall include the offer of the temporary relocation accommodations.
- Relocation consultants shall schedule temporary relocation moves after issuance of the required notices and coordinate and complete moves to temporary HACE units based on the construction schedule.
- Relocation staff shall be responsible for tracking tenants during the relocation period and coordinating support services as needed.

G. Return to Project

Residents who are staying out of their units for the duration of Project construction will be provided with at least 30 days' notice of the time they may return to the Project, and which units will be prepared for them. Tenants utilizing a one-time move to another HACE unit will receive at least 10 days' notice of date and time to move to a fully rehabilitated Project unit. Consideration will be provided for circumstances beyond the control of the residents such as medical emergencies.

Failure to complete the move when advised doing so shall result in termination of the right to return and termination of any further relocation assistance. HACE/Brinshore may take all legal action necessary including eviction action, if residents fail to vacate the temporary housing unit as directed.

H. Over-Housed Tenants

Families that were over-housed prior to temporary relocation will be moved back to an appropriately sized Project unit. If appropriately sized units are not available, a family may not be able to return to the Project unless they can increase their family composition to meet Section 8 New Admission standards for the unit sizes available.

Over-housed families shall be right sized in the following order:

- Households with the same number of excess bedrooms shall be right-sized based on length of tenancy beginning with the oldest lease dates of the initial move in at the property.
- Households with the greatest number of excess bedrooms shall be right sized to the smallest appropriate size unit available at the property.
- Residents may voluntarily request a smaller unit.

I. Post-Occupancy in Overcrowded Units

If a household is overcrowded upon their return, they shall be housed in the largest unit available for their household size at the property. Any family that is under-housed may continue to be under-housed provided they are not overcrowded until a tenant leaves the Project.

Relocation consultants shall complete the return moves for all tenants to an appropriate unit within the Project as described in this Plan.

J. Relocation Extensions Due to Construction Delays

If construction delays result in temporary relocation exceeding the initially anticipated number of months, HACE/Brinshore and relocation representatives shall promptly notify all affected residents of the delay and provide all reasonable expenses reimbursement associated with such a delay. An addendum to the initial Relocation Agreement shall be prepared and advisory assistance provided to assure residents that but for the number of months they need to be away from their unit, no other terms are changing. They will potentially be able to claim additional financial benefits, in which case relocation claim forms will be prepared and explained and reimbursements issued promptly.

K. Termination of Lease During Temporary Relocation

A material breach of the lease agreement or temporary housing lease agreement and failure to correct such breach, within the stated notice requirements under the lease, state law or federal regulations may result in eviction action during the temporary relocation period. No further relocation benefits will be provided to the evicted households, and they will not have the right to return to the new Green Phase units. It is imperative that tenants maintain their good standing at the Project or in the temporary relocation unit.

L. Record Keeping

HACE shall be responsible for retention of all General Information Notices issued prior to the implementation of the relocation program. Brinshore and their relocation consultant shall be

responsible for all other records related to the resident relocation process. Records and documentation shall be kept in sufficient detail to demonstrate compliance with all URA, State and HUD requirements. Such records shall include all notices and claim forms including evidence of payment of claims, and shall be retained for at least 3 years after the latest date of (1) the issuance of all payments to affected tenants;(2) the date of project completion; or (3) resolution of all issues resulting from litigation, negotiation, audit, or other action.

M. Relocation Tax Consequences

In general, relocation payments are not considered income for the purpose of the Internal Revenue Code of 1968, or the Personal Income Tax Law, Part 10 of the Revenue and Taxation Code. Displaced people are encouraged, however, to consult with personal tax advisors concerning the tax consequences or social service providers to obtain information concerning the tax consequences associated with relocation payments.

N. Grievance Procedures

HACE's Grievance Policy follows the standards described in section 24.10 of the Uniform Act. All displaced people have the right to ask for administrative review concerning determinations of eligibility; relocation payment amount; the failure by HACE/Brinshore to provide comparable temporary housing referrals; or HACE/Brinshore's property management practices.

Requests for administrative review and informal hearings will be directed to HACE Executive Director and senior administrative staff. All requests for review will receive written responses from HACE within 3 weeks of their receipt.

If an informal appeal is denied, appellants will be entitled to file a written request for a formal hearing before an impartial and independent hearing officer. The appellant does not have to exhaust administrative remedies first; the appeal/grievance can either go directly to the city, directly to HCD or directly to the Court. Any person and/or organization directly affected by the relocation plan may petition the Department of Housing and Community Development (HCD), located at 651 Bannon Street, SW Tower, Sacramento, CA 95811 to review the relocation plan.

More details concerning the appeals process will be provided upon request. Appellants will retain their appeal rights for up to 18 months following the date of displacement from the Project premises or receipt of final payment for relocation benefits, whichever is later.

O. Eviction Policy

HACE and Brinshore recognize that eviction is permissible only as a last resort and that relocation records must be documented to reflect the specific circumstances surrounding any eviction. Eviction will only take place in cases of nonpayment of rent, serious violation of the rental agreement, a dangerous or illegal act in the unit, or if the household refuses all reasonable offers to move. Eviction will not affect the eligibility of a person legally entitled to relocation benefits. However, legal action to evict shall be undertaken for tenant's refusal to accept temporary relocation housing without good cause.

Good cause for temporary relocation shall be limited to the following:

- The family demonstrates that the temporary housing unit poses an immediate and severe threat to the family's life, health or safety. HACE/Brinshore will provide the family with one additional alternate temporary housing unit.
- A health professional verifies temporary hospitalization. HACE/Brinshore will work with the identified emergency contact for the family to coordinate temporary relocation of furnishing and personal belongings to limit delays in the Project.

P. Immigration Status

Federal legislation (PL105-117) prohibits the payment of relocation assistance benefits under the Uniform Act to any alien not lawfully present in the United States unless such ineligibility would result in an exceptional and extremely unusual hardship to the alien's spouse, parent, or child any of whom is a citizen or an alien admitted for permanent residence. Exceptional and extremely unusual hardships are defined as significant and demonstrable adverse impact on the health or safety, continued existence of the family unit, and any other impact determined by the overseeing government authority to negatively affect the alien's spouse, parent or child.

To track and account for relocation assistance and benefit payments, relocation staff will be required to seek immigration status information from each displacee 18 years and older by having them self-certify as to their legal status.

Q. Citizen Rights and Participation

HACE and Brinshore will fully meet its obligations under the Relocation Guidelines with respect to the following activities:

- No re-screening of tenants upon relocation. Current households are not subject to re-screening, income eligibility, or income targeting provisions. Consequently, current households will be grandfathered for conditions that occurred prior to relocation but will

be subject to any ongoing eligibility requirements for actions that occur after redevelopment. Over-income households at times of relocation would continue to be treated as assisted units.

- **Right to Return.** Any residents that may need to be temporarily relocated to facilitate new construction will have a right to return to an assisted unit at the Project once construction is completed. Where the transfer of assistance to a new site is warranted and approved, residents of the converting Project will have the right to reside in an assisted unit at the new site once construction is complete. Residents of a property undergoing conversion of assistance may voluntarily accept HACE/Brinshore's offer to permanently relocate to another assisted unit and thereby waive their right to return to the Project after construction is completed.
- **Public Review and Citizen Participation.** HACE and Brinshore are committed to ensuring meaningful citizen participation in the relocation planning process. The following activities have been or will be undertaken:
 - **Public Review Period** – a 30-day public review period was scheduled for April 9, 2026 through May 9, 2026;
 - Copies of this plan were made available at the Housing Authority of the City of Eureka, 735 W Everding St, Eureka, CA 95503 (during regular office hours), at the Humboldt County Library - Eureka Main Branch, 1313 3rd St, Eureka, CA 95501 (during library hours), and electronically by emailing nLenic@lacialconsulting.com
 - **Method of Delivery** - all current Project households received the 30-Day Relocation Plan Review Notice via personal delivery, and copies were hand-delivered to each occupied unit.
 - **Resident Meetings** - individual meetings and interviews were conducted with each household between March 12, 2026 and March 17, 2026.
 - **Relocation Committee** - given that Project involves only 7 households potentially being displaced, and 44 units will be added to the housing supply, this does not constitute a "substantial number of displaced persons" requiring formation of a formal Relocation Committee, however, all residents will continue to be included in and consulted regarding this relocation plan and any resident or community organization may submit comments during the public review period;
 - **Comments Received** – any comments received during the public review period will be compiled and included in **Appendix G** prior to submission to the HACE Board of Directors for approval.
- HACE Executive Director reviewed this Plan and found the relocation plan to be consistent with local housing element.

R. Non-Discriminatory Statement

Residents who are relocated under temporary, extended temporary or voluntary permanent relocation as a result of the rehabilitation or construction shall be relocated to other decent, safe, sanitary and affordable housing (at rents no higher than permitted under the HUD program) on a non-discriminatory basis without regard to race, color, religion, creed, national origin, handicap, age, familial status, sex, sexual preference, sexual orientation or gender identity and in compliance with federal, state and local laws.

S. Project Timing

It is anticipated that Brinshore will secure funding for the Project in April 2026. Construction is scheduled to begin immediately upon closing, anticipated for December 2026 and the Project tenants could receive 90-day Relocation Notices to Vacate in June/July 2026, followed by 30-day Notices to Vacate to be issued to the remaining tenants, as needed.

T. Estimated Relocation Costs

The Project will be funded with a combination of local, state and federal funds. The estimate of relocation benefits is based on available tenant data, assuming 7 occupied households will relocate permanently to other HACE units or to market units with Section 8 Tenant Voucher and move one time only. Relocation estimate is \$23,800.00 for all 7 occupied units fixed moving allowance, security deposit, and rental assistance covering the rent difference of market rents and fair market rents (maximum TPV allowance), and adding a 10% contingency (see **Appendix F**).

The estimated relocation budget does not include consideration of relocation administrative services nor any related consulting services which may be necessary for the implementation of the Plan and Project.

Appendices

Appendix A

HACE Redevelopment – Green Phase Property Site Schematic

Appendix B

HUD 2025 Income Limits - County of Humboldt

The following figures are approved by the U. S. Department of Housing and Urban Relocation (HUD) for use in the County of Humboldt to define and determine housing eligibility by income level.

Area Median - \$93,900

Household Size	Extremely Low	Very Low	Low
One Person	\$19,750	\$32,900	\$52,600
Two People	\$22,550	\$37,600	\$60,100
Three People	\$26,650	\$42,300	\$67,600
Four People	\$32,150	\$46,950	\$75,100
Five People	\$37,650	\$50,750	\$81,150
Six People	\$43,150	\$54,500	\$87,150
Seven People	\$48,650	\$58,250	\$93,150
Eight People	\$54,150	\$62,000	\$99,150

Figures are per the Department of Housing and Community Development (California), Division of Housing Policy Development, published April 23, 2025.

Appendix C

Qualified Population Summary

The following list summarizes the income levels and household characteristics for each of the 7 households currently residing at the Project:

Address	Bedrooms	Family Size	Annual Income	Income Level	Senior (62+)	Disability
Unit 1	3	3	\$10,200	30% AMI	NO	NO
Unit 2	2	2	\$12,240	30% AMI	NO	YES
Unit 3	2	4	\$10,200	30% AMI	NO	NO
Unit 4	1	1	\$18,732	30% AMI	YES	YES
Unit 5	1	1	\$14,148	30% AMI	YES	YES
Unit 6	1	2	\$29,220	50% AMI	YES	NO
Unit 7	3	3	\$9,385	30% AMI	NO	NO

Appendix D

List of Available Market Units for Rent

No	Address	Property Type	Bed	Bath	Rent
1	330 Q. Street, Apt. 3, Eureka, CA 95501	APT	1	1	795
2	333 Q St., Eureka, CA 95501	APT	1	1	795
3	51 Loleta Dr.#4, Eureka, CA	APT	1	1	800
4	1525 3rd St., Eureka, CA 95501	SFR	1	1	900
5	1708 J Steet, Eureka, CA 95501	APT	1	1	925
6	1724 J Street, Eureka, CA 95501	APT	1	1	950
7	2303 Summer St. Eureka, CA 95501	APT	1	1	950
8	455 Union St., Arcata, CA 95521	APT	1	1	950
9	115 Samoa Blvd. Arcata, CA 95521	APT	1	1	954
10	312 N. Fortuna Blvd. #2, Fortuna, CA 95540	APT	1	1	975
11	4906 Valley East Blvd., Apt B, Arcata, CA 95521	APT	1	1	1000
12	990 6th Steet, #2, Arcata, CA 95521	APT	1	1	1000
13	1895 H St. Arcata, CA 95521	APT	1	1	1025
14	1119 Cousins St., Apt 6, Eureka, CA 95501	APT	1	1	1100
15	3944 T St., #4, Eureka, CA 95503	APT	1	1	1100
16	4056 Walnut Drive, Unit C, Eureka, CA 95503	Duplex	1	1	1200
17	1435 Dean Street, Eureka, CA 95502	APT	1	1	1200
18	323 3rd St., Eureka, CA 95501	APT	1	1	1200
19	913 I Street, Eureka, CA 95501	APT	1	1	1200
20	3785 G Street # 2, Eureka, CA 95503	APT	1	1	1200
21	913 A St. # 1/2 Eureka, CA 95501	APT	1	1	1200
22	112 I St., #3, Eureka, CA 95501	APT	1	1	1250
23	3053 Smith Lane, Fortuna, CA 95540	APT	1	1	1295
24	630 Buhne St. Eureka, CA 95501	APT	1	1	1295
25	3471 M St., Eureka, CA 95503	APT	1	1	1350
26	212 E. St., Eureka, CA 95501	APT	1	1	1400
27	896 10th St., Eureka, CA 95501	APT	1	1	1450
28	138 E. Street, Apt. 304, Eureka, CA 95501	APT	1	1	1500
29	4455 Hwy 36 Hydesville, CA 95547	SFR	1	1	1550
30	217 D. St., Eureka, CA 95501	APT	1	1	1600
31	716 W. Long St. Eureka, CA 95501	Duplex	1	1	1600
32	3340 1/2 Montgomery St. Eureka, CA 95503	APT	1	1	1650
33	1722 18th St., Eureka, CA 95501	APT	1	1	1695

No	Address	Property Type	Bed	Bath	Rent
34	2805 Harrison Ave, Eureka, CA 95501	APT	1	1	1850
35	4040 Cedar St., Eureka, CA 95503	SFR	1	1	1900
36	4044 Cedar St. Eureka, CA	SFR	1	1	1900
37	4042 Cedar St., Eureka, CA 95503	SFR	1	1	1900
38	2408 Quaker St. Eureka, CA 95501	APT	1	1	2100
				median	1200
1	16 Wabash Ave., Apt.1, Eureka, CA 95501	APT	2	1	875
2	1055 Main Street #A, Fortuna, CA 95540	APT	2	1	950
3	1507 5th St., Eureka, CA 95501	APT	2	1	950
4	1911 Hilfiker Lane #18, Eureka, CA	APT	2	1	950
5	1035 11th St., Eureka, CA 95501	APT	2	1	1100
6	490 S. Fortuna Blvd. #A, Loleta, CA	APT	2	1	1100
7	21353 Harrison Ave., Eureka, CA 95503	APT	2	1	1150
8	1440 California St. Eureka, CA 95501	APT	2	1	1175
9	1270 Myrtle Lane, Eureka, CA 95501	APT	2	1	1200
10	2237 Heather Lane #D, Arcata, CA 95521	APT	2	1	1250
11	3124 California St. Eureka, CA 95501	APT	2	1	1250
12	1574 McCullen Ave., Eureka, CA 95501	APT	2	1	1350
13	820 3rd Ave., Blue Lake, CA 95525	SFR	2	1	1350
14	652 Grotzman Road, Unit B, Arcata, CA 95521	SFR	2	1	1400
15	1976 Myrtle Avenue, Eureka, CA 95502	APT	2	1	1400
16	2620 Kathleen Court, Eureka, CA 95502	APT	2	1	1450
17	2323 3rd St., #D, Eureka, CA 95501	APT	2	1	1450
18	2110 California St., Eureka, CA 95501	APT	2	1	1450
19	2102 California St. Eureka, CA 95501	APT	2	1	1450
20	250 Grant St., Unit 1-3, Eureka, CA 95501	APT	2	1	1490
21	3085 Smith Lane, Fortuna, CA 95540	APT	2	1	1495
22	1011 J St., Eureka, CA 95501	Duplex	2	1	1500
23	1130 Q Street, Arcata, CA 95521	Duplex	2	1	1550
24	2336 Newburg Rd., Fortuna, CA 95540	APT	2	1	1550
25	3785 G Street # 4, Eureka, CA 95503	APT	2	1	1700
26	964 9th St.# 1, Arcata, CA 95521	APT	2	1	1750

No	Address	Property Type	Bed	Bath	Rent
27	229 Harris St., Eureka, CA 95503	SFR	2	1	1750
28	1943 Cristian Lane, Eureka, CA 95503	SFR	2	2	1860
29	3520 Kenwood Rd. Fortuna, CA 95540	SFR	2	2	1950
30	1924 Myrtle Ave., Eureka, CA 95501	APT	2	1	2000
31	131 Seal Camp Lane, Garberville, CA 95542	SFR	2	2	2200
32	757 Park Ave., Arcata, CA 95521	SFR	2	2	2350
33	2404 Quaker St., Eureka, CA 95501	APT	2	1	2400
				median	1450
1	6335 Humboldt Hill #6, Eureka, CA	APT	3	1	1450
2	1534 6th Ave., Eureka, CA 95501	SFR	3	1	1675
3	3079 Smith Lane, Fortuna, CA 95540	APT	3	2	1700
4	3235 High Street, Eureka, CA 95503	SFR	3	1	1700
5	3135 Central Avenue, Eureka, CA 95503	SFR	3	1	1800
6	2060 Foxwood Dr., Eureka, CA 95503	SFR	3	2	2000
7	4205 D. St. Eureka, CA 95503	SFR	3	2	2000
8	2276 Mabelle Ave., Eureka, CA 95503	SFR	3	2	2150
9	1922 I Street, Eureka, CA 95501	SFR	3	1	2160
10	1818 California St., Eureka, CA 95501	SFR	3	2	2190
11	1820 Heather Lane, Eureka, CA	SFR	3	2	2300
12	2314 Kipling Dr., Eureka, CA 95503	SFR	3	2	2300
13	3329 N St. Eureka, CA 95503	SFR	3	1	2400
14	2135 B Street, Eureka, CA 95501	SFR	3	2	2400
15	2415 J Street, Eureka, CA 95501	SFR	3	2	2500
16	931 Hill St., Eureka, CA 95501	APT	3	1	2500
17	2808 Harrison Ave., Eureka, CA 95501	SFR	3	2	2500
18	1127 Beith Ct Arcata, CA 95521	APT	3	2	2700
				median	2175

No	Address	Property Type	Bed	Bath	Rent
1	1335 6th St., unit #14, Eureka, CA 95501	APT	1	1	\$950.00
2	1508 H St, Eureka, CA 95501	APT	1	1	\$975.00
3	4043 Williams St UNIT 1, Eureka, CA 95503	APT	1	1	\$1,050.00
4	212 E St unit 212 E #308, Eureka, CA 95501	APT	1	1	\$1,095.00
5	1213 6th St unit C, Eureka, CA 95501	APT	1	1	\$1,100.00
6	3901 Glenwood St. #C, Eureka, CA 95501	APT	1	1	\$1,295.00
7	2241 Arbutus St., unit #22, Eureka, CA 95503	APT	1	1	\$1,300.00
8	1213 11th St, Eureka, CA 95501	APT	1	1	\$1,350.00
9	918 P St., Unit A, Eureka, CA 95501	APT	1	1	\$1,450.00
10	1439 D St unit 1439 D St, Eureka, CA 95501	SFR	1	1	\$1,525.00
11	369 8th St unit Unit A, Eureka, CA 95501	APT	1	1	\$1,550.00
12	2082 Quaker St., unit #H, Eureka, CA 95501	APT	1	1	\$1,550.00
13	2082 Quaker St, Eureka, CA 95501	APT	1	1	\$1,550.00
14	639 16th St., #3, Eureka, CA 95501	APT	1	1	\$1,550.00
15	3970 Cedar St., APT A, Eureka, CA 95503	APT	1	1.5	\$1,600.00
16	2220 California St, Eureka, CA 95501	APT	1	1	\$1,650.00
17	1724 3rd St #3, Eureka, CA 95501	APT	1	1	\$1,650.00
18	2220 I St #B, Eureka, CA 95501	APT	1	1	\$1,700.00
19	1228 C St #B, Eureka, CA 95501	SFR	1	1	\$1,800.00
20	4190 Hillside Ct., Unit 2, Eureka, CA 95503	APT	1	1	\$2,000.00
21	931 Hill St APT 20, Eureka, CA 95501	APT	1	1.5	\$2,150.00
22	2522 Albee St, Unit B, Eureka, CA 95501	APT	1	1.5	\$2,150.00
23	2288 Mabelle Ave unit Unit #2, Eureka, CA 95503	APT	1	1	\$2,400.00
24	4190 Hillside Ct., Unit 1, Eureka, CA 95503	APT	1	1	\$2,800.00
				median	\$1,550.00
1	1816 H St., Eureka, CA 95501	SFR	2	1	\$1,000.00
2	2325 2nd St, Eureka, CA 95501	APT	2	1	\$1,200.00
3	23 S G St #A., Arcata, CA 95521	APT	2	1	\$1,200.00
4	875 J St, Arcata, CA 95521	APT	2	1	\$1,200.00
5	6641 3rd St #6641, Eureka, CA 95503	APT	2	1	\$1,295.00
6	152 Perch St., Eureka, CA 95503	SFR	2	1	\$1,300.00
7	624 15th St., Eureka, CA 95501	SFR	2	1	\$1,350.00
8	1615 McCullens Ave., Eureka, CA 95503	SFR	2	1	\$1,400.00

No	Address	Property Type	Bed	Bath	Rent
9	Oak St., Eureka, CA 95503	SFR	2	1	\$1,400.00
10	1008 F St, Arcata, CA 95521	APT	2	1	\$1,450.00
11	1035 Cousins St UNIT F, Eureka, CA 95501	APT	2	1	\$1,475.00
12	2004 G St unit B, Eureka, CA 95501	APT	2	1	\$1,500.00
13	491 4th St, Arcata, CA 95521	APT	2	1	\$1,500.00
14	1039 9th St APT 3, Arcata, CA 95521	APT	2	1	\$1,550.00
15	988 9th St., Arcata, CA 95521	SFR	2	1	\$1,575.00
16	2634 G St., Eureka, CA 95501	SFR	2	1	\$1,600.00
17	2220 I St #B, Eureka, CA 95501	APT	2	1	\$1,700.00
18	3204 Union St., Eureka, CA 95503	SFR	2	1	\$1,790.00
19	310 Monument Rd., Rio Dell, CA 95562	SFR	2	1	\$1,800.00
20	1240 East Ave., Eureka, CA 95501	SFR	2	2	\$1,900.00
21	202 W Clark St., Eureka, CA 95501	SFR	2	1	\$2,050.00
22	1811 California St., Eureka, CA 95501	SFR	2	1.5	\$2,100.00
23	931 Hill St unit # 20, Eureka, CA 95501	CONDO	2	1	\$2,150.00
24	624 Creighton St, Eureka, CA 95501	SFR	2	2	\$2,250.00
25	2430 Bainbridge St., Eureka, CA 95503	SFR	2	2	\$2,250.00
26	3241 Trinity St., Eureka, CA 95501	SFR	2	2	\$2,400.00
27	3613 Sequoia Ln., Eureka, CA 95503	SFR	2	1	\$2,400.00
28	3333 Lucia Ave., Eureka, CA 95503	SFR	2	2	\$2,490.00
29	4751 Scott Way, Eureka, CA 95503	SFR	2	2	\$2,500.00
30	2303 B St., Eureka, CA 95501	SFR	2	2	\$2,500.00
31	4751 Scott Way., Eureka, CA 95503	SFR	2	2	\$2,500.00
32	1110 East Ave., Eureka, CA 95501	SFR	2	2	\$2,500.00
33	1245 Chester Ave., Arcata, CA 95521	SFR	2	1	\$2,500.00
				median	\$1,600.00
1	4982 Valley East Blvd, Arcata, CA 95521	APT	3	1	\$1,300.00
2	541 15th St., Fortuna, CA 95540	APT	3	1	\$1,300.00
3	1119-1139 12th St, Arcata, CA 95521	APT	3	1	\$1,350.00
4	1385 Sunset Ave #1385, Arcata, CA 95521	APT	3	1	\$1,400.00
5	840 10th St., Fortuna, CA 95540	APT	3	1	\$1,400.00
6	2712 Meadow Creek Way, Arcata, CA 95521	APT	3	1	\$1,650.00
7	2712 Meadow Creek Way, Arcata, CA 95521	APT	3	1	\$1,650.00

No	Address	Property Type	Bed	Bath	Rent
8	1023 Russ St., Eureka, CA 95501	SFR	3	2	\$1,700.00
9	1130 & 1140 Q St, Arcata, CA 95521	APT	3	1	\$1,700.00
10	1372 Lincoln Ave, Arcata, CA 95521	SFR	3	1	\$1,750.00
11	1570 Union St #1580, Arcata, CA 95521	APT	3	1	\$1,795.00
12	3544 M St, Eureka, CA 95503	SFR	3	2	\$2,000.00
13	1811 California St., Eureka, CA 95501	DUPLEX	3	1.5	\$2,100.00
14	931 Hill St APT 20, Eureka, CA 95501	APT	3	1.5	\$2,150.00
15	3572 Spear Ave UNIT A, Arcata, CA 95521	APT	3	2	\$2,300.00
16	1935 Henderson St, Eureka, CA 95501	SFR	3	2	\$2,325.00
17	3241 Trinity St., Eureka, CA 95501	SFR	3	2	\$2,400.00
18	1110 East Ave, Eureka, CA 95501	SFR	3	1	\$2,500.00
19	4751 Scott Way, Eureka, CA 95503	SFR	3	2	\$2,500.00
20	1245 Chester Ave., Arcata, CA 95521	SFR	3	1	\$2,500.00
21	1443 Stromberg Ave., Arcata, CA 95521	SFR	3	1	\$2,575.00
22	7325 Dauber Ln, Eureka, CA 95503	SFR	3	2	\$2,750.00
23	1407 N St, Arcata, CA 95521	SFR	3	2	\$2,800.00
24	46 Blue Spruce Dr, Eureka, CA 95503	SFR	3	2	\$2,875.00
				median	\$2,100.00

No	Address	Property Type	Bed	Bath	Rent
1	4656 Myrtle Ave #F, Eureka, CA 95503	APT	1	1	\$600.00
2	1109 Thomas St, Eureka, CA 95503	HOUSE	1	1	\$750.00
3	1116 C St, Eureka, CA 95501	APT	1	1	\$775.00
4	3473 McLean St, Eureka, CA 95501	APT	1	1	\$800.00
5	516 G St #3, Eureka, CA 95501	APT	1	1	\$850.00
6	1335 6th St, Eureka, CA 95501	APT	1	1	\$950.00
7	921 I St #3, Eureka, Ca 95501	APT	1	1	\$1,000.00
8	1826 H St, Arcata, CA 95518	APT	1	1	\$1,000.00
9	2351 Austin St, Eureka, CA 95503	APT	1	1	\$1,000.00
10	990 6th St #2, Arcata, CA 95518	APT	1	1	\$1,095.00
11	4753 Herron Rd #2, Eureka, CA 95503	APT	1	1	\$1,095.00
12	1528 12th St, Arcata, CA 95518	APT	1	1	\$1,100.00
13	3486 L K Wood Blvd, Arcata CA, 95518	APT	1	1	\$1,195.00
14	1200 Foster Ave, Arcata CA, 95518	APT	1	1	\$1,195.00
15	601 Diamond Dr #605, Arcata CA, 95518	APT	1	1	\$1,195.00
16	963 W Harris St #B, Eureka, CA 95503	APT	1	1	\$1,195.00
17	1403 E St #3, Eureka Ca, 95501	APT	1	1	\$1,200.00
18	2831 S St #A, Eureka, CA 95501	APT	1	1	\$1,200.00
19	1215 Myrtle Ave, Eureka, CA 95501	APT	1	1	\$1,200.00
20	1237 West Ave, Eureka, CA 95501	APT	1	1	\$1,200.00
21	1220 L St, Eureka, CA 95501	APT	1	1	\$1,200.00
22	1313 Vernon St, Eureka, CA 95501	APT	1	1	\$1,245.00
23	3129 Pine St #2, Eureka, CA 95503	APT	1	1	\$1,250.00
24	3435 Edgewood Rd, Eureka, CA 95501	APT	1	1	\$1,250.00
25	896 10th St #1, Eureka, CA 95501	APT	1	1	\$1,250.00
26	3901 Glenwood Ave #C, Eureka, CA 95501	APT	1	1	\$1,275.00
27	516 G St #9, Eureka, CA 95501	APT	1	1	\$1,400.00
28	1215 B St, Eureka, CA 95501	APT	1	1	\$1,450.00
29	1221 H Street, Eureka, CA 95501	APT	1	1	\$1,500.00
30	422 1st St #G, Eureka, CA 95501	APT	1	1	\$1,550.00
31	2145 Western Ave #A, Arcata, CA 95518	APT	1	1	\$1,590.00

No	Address	Property Type	Bed	Bath	Rent
32	3133 Pine St. #1, Eureka Ca, 95501	APT	1	1	\$1,650.00
33	138 E St, Eureka, CA 95501	APT	1	1	\$1,650.00
34	1219 H St, Eureka, CA 95501	APT	1	1	\$1,675.00
35	3340 1/2 Montgomery St, Eureka, CA 95503	APT	1	1	\$1,700.00
36	4190 Hillside Ct #2, Eureka, CA 95503	APT	1	1	\$1,800.00
37	2408 Quaker St, Eureka, CA 95501	APT	1	1	\$1,900.00
38	746 Ole Hansen Rd, Eureka, CA 95503	HOUSE	1	1	\$1,900.00
39	1315 Lincoln Ave #A, Arcata, CA 95518	APT	1	1	\$1,950.00
40	7570 Myrtle Ave, Eureka, CA 95501	APT	1	1	\$2,000.00
				median	\$1,200.00
1	2500 Hubbard Ln #A, Eureka, CA 95501	APT	2	1	\$1,150.00
2	1231 Myrtle Ave #C, Eureka, CA 95501	APT	2	2	\$1,150.00
3	1231 Myrtle Ave, Eureka, CA 95501	APT	2	2	\$1,150.00
4	1711 G St, Eureka, CA 95501	APT	2	1	\$1,175.00
5	138 E St #307, Eureka, CA 95501	APT	2	1	\$1,200.00
6	1035 11th St #3, Eureka, CA 95501	APT	2	1	\$1,200.00
7	606 8th St #3, Eureka, CA 95501	APT	2	1	\$1,200.00
8	1035 11th St, Eureka, CA 95501	APT	2	1	\$1,200.00
9	3030 Park St, Eureka, CA 95501	APT	2	2.5	\$1,250.00
10	9 15th St. #D, Eureka, CA 95501	APT	2	1	\$1,275.00
11	15th St Unit D, Eureka, CA 95501	APT	2	1	\$1,275.00
12	1911 Hilfiker Ln # 20, Eureka, CA 95503	APT	2	1	\$1,300.00
13	1023 4th St #5, Eureka, CA 95501	APT	2	1	\$1,350.00
14	2142 Spring St. #B, Eureka, CA 95501	APT	2	1	\$1,350.00
15	606 8th St Unit # 3, Eureka, CA 95501	APT	2	1	\$1,390.00
16	1638 7th St, Eureka, CA 95501	APT	2	1	\$1,450.00
17	307 W Sonoma St, Eureka, CA 95501	APT	2	1	\$1,450.00
18	4153 Walnut Dr, Eureka, CA 95501	APT	2	1	\$1,490.00
19	2511 J St, Eureka, CA 95501	HOUSE	2	1	\$1,490.00
20	1815 Russ St, Eureka, CA 95501	APT	2	1	\$1,500.00

No	Address	Property Type	Bed	Bath	Rent
21	1617 3rd St, Eureka, CA 95501	APT	2	1	\$1,550.00
22	2810 H St, Eureka, CA 95501	APT	2	1	\$1,550.00
23	2214 Myrtle Avenue, Eureka, CA 95501	TOWN HOUSE	2	1	\$1,600.00
24	3983 T St Unit D, Eureka, CA 95503	APT	2	1	\$1,600.00
25	6613 2nd St, Fields landing, CA 95501	HOUSE	2	2	\$1,615.00
26	1440 Myrtle Ave, Eureka, CA 95501	APT	2	1.5	\$1,650.00
27	15th St Unit B, Eureka, CA 95501	APT	2	1	\$1,745.00
28	2810 H St, Eureka, CA 95501	HOUSE	2	1.5	\$1,750.00
29	4190 Hillside Ct, Eureka, CA 95501	APT	2	1	\$1,750.00
30	1711 G ST, Eureka, CA 95501	APT	2	1	\$1,750.00
31	187 F St #B, Arcata, CA 95518	APT	2	1	\$1,800.00
32	830 Bayside Rd #D, Arcata, CA 95518	APT	2	1	\$1,800.00
33	964 9th St #3, Arcata, CA 95518	APT	2	1	\$1,850.00
34	2970 Mack Rd #D, Arcata, CA 95518	APT	2	1.5	\$1,950.00
35	585 Ridge Rd #C, Arcata, CA 95518	APT	2	1.5	\$1,950.00
36	1093 5th St #E, Arcata, CA 95518	APT	2	1	\$1,990.00
37	4050 N US Highway 101 Unit 2	APT	2	1	\$2,000.00
38	5553 Noe Ave, Eureka, CA 95503	HOUSE	2	1	\$2,000.00
39	1016 F St #2, Arcata, CA 95518	APT	2	1	\$2,150.00
40	1016 F St #5, Arcata, CA 95518	APT	2	1	\$2,150.00
41	724 Hidden Creek Rd #B, Arcata, CA 95518	TOWN HOUSE	2	2	\$2,250.00
42	1720 Westfall Ct #A, Arcata, CA 95518	APT	2	1	\$2,500.00
43	4190 Hillside Ct Unit 1, Eureka, CA 95503	APT	2	1	\$2,500.00
44	401 4th St #C, Arcata, CA 95518	APT	2	1	\$3,000.00
				median	\$1,550.00
1	137 12th Street #5C, Fortuna, CA 95540	APT	3	1	\$1,100.00
2	2928 A St, Eureka, CA	HOUSE	3	1	\$1,600.00
3	220 W Church St #1, Eureka, CA 95501	APT	3	2	\$1,650.00
4	1814 H St, Eureka, CA 95501	HOUSE	3	1	\$1,700.00
5	6190 Purdue Dr, Eureka, CA 95503	HOUSE	3	2	\$1,750.00

No	Address	Property Type	Bed	Bath	Rent
6	3325 Cottage St, Eureka, CA95503	HOUSE	3	1	\$1,800.00
7	2441 Garland St, Eureka, CA 95501	HOUSE	3	1	\$1,850.00
8	1305 McCullens Ave #A, Eureka, Ca 95501	HOUSE	3	2	\$1,875.00
9	3310 R St, Eureka, CA 95501	HOUSE	3	1	\$1,950.00
10	6108 Purdue Dr, Eureka, CA 95501	HOUSE	3	2	\$2,000.00
11	2812 Harrison Ave, Eureka, CA 95501	HOUSE	3	2	\$2,000.00
12	3310 R St, Eureka, CA 95503	HOUSE	3	1	\$2,000.00
13	2297 Hillcrest Ave, Eureka, CA 95501	HOUSE	3	2	\$2,100.00
14	122 Brennan St unit A, Eureka, CA 95501	APT	3	2	\$2,100.00
15	3751 F St, Eureka, CA 95501	HOUSE	3	2	\$2,150.00
16	859 Shirley, Arcata, CA 955211	HOUSE	3	1	\$2,200.00
17	1841 Lime Ave, McKinleyville, CA 95519	HOUSE	3	2	\$2,200.00
18	674 Hidden Creek Rd, Arcata, CA 95518	TOWN HOUSE	3	2	\$2,300.00
19	90 Whittier Ln, McKinleyville, CA 95519	HOUSE	3	2	\$2,300.00
20	2382 Ariel Way, Arcata, CA 95518	HOUSE	3	2	\$2,350.00
21	801 Summer ST, Eureka, CA 95501	APT	3	2	\$2,350.00
22	2845 Clover Way #B, Arcata, CA 95521	APT	3	2.5	\$2,400.00
23	1750 Jessica Ct, Arcata, CA 95518	HOUSE	3	2	\$2,450.00
24	1702 S 2nd Ave, Fortuna, CA 95540	HOUSE	3	1	\$2,450.00
25	185 California Ave, Arcata, CA 95518	HOUSE	3	2.5	\$2,500.00
26	1313 Vernon St, Eureka, CA 95501	HOUSE	3	1	\$2,500.00
27	2275 Plunkett Rd, Bayside, CA 95524	HOUSE	3	2	\$2,550.00
28	2205 Scenic Dr, Fortuna, CA 95540	HOUSE	3	2	\$2,650.00
29	2032 Shamrock Dr, Fortuna, CA 95540	HOUSE	3	2	\$3,500.00
				median	\$2,150.00

Appendix E

Sample Notices



HOUSING AUTHORITIES CITY OF EUREKA & COUNTY OF HUMBOLDT



735 WEST EVERDING STREET, EUREKA CA 95503
PHONE: (707) 443-4583 FAX: (707) 443-4762 TTY: (800) 651-5111
WWW.EUREKAHUMBOLDTHA.ORG

GENERAL INFORMATION NOTICE

March 9, 2026

Tenant Name and All Other Occupants
664 Burrill St.
Eureka, CA 95503

Dear Tenant Name and All Other Occupants:

The Housing Authority of the City of Eureka (HACE) is interested in demolishing and redeveloping the property you currently occupy at 664 Burrill Street under Section 18 of the U.S. Housing Act of 1937. In October 2023, HACE in partnership with Brinshore Development LLC (Brinshore) proposed full redevelopment of the Green Phase site (Project). Further planning efforts on the feasibility of the project, the need to ensure that all residents have a right to return to a right-sized new unit in the revitalized project, to provide for reasonable and compliant handicap access to its residents, and the increasing need for affordable housing in Eureka led HACE to conclude that the best approach will be to demolish the existing 8 units of public housing and replace them with up to 44 units of newly built rental affordable housing.

HACE and Brinshore are currently working on design, feasibility, and financing plans for the new construction project. The Project construction is expected to begin in September 2026. Upon completion of construction, tenants who qualify may choose to return to the newly constructed Green Phase units. Relocation advisory assistance will be provided to cause the least amount of inconvenience as possible for all residents.

This is not a notice of eligibility for relocation assistance or a notice to vacate.

If you are determined to be eligible for relocation assistance in the future, you may be eligible for: (1) relocation advisory services to help you find another place to live; (2) at least ninety (90) days advance written notice of the date you will be required to move; (3) payment for your moving expenses; and (4) comparable housing, which may include housing with reasonable accommodations for disability if required under section 504 of the Rehabilitation Act of 1973 and HUD's regulations at 24 CFR part 8. HACE and Brinshore have retained LACAL Consulting, Inc. (LACAL), to assist in developing a Relocation Plan for Blue Phase new construction project.

In order to prepare the Relocation Plan, representatives of LACAL will meet with each individual family/household in order to identify specific family needs during the relocation. You will be provided with advisory services to explain the relocation program and help answer any questions that you may have about this process.

Because Green Phase is a Section 9 Public Housing site, the establishment of a relocation plan and all relocation activities are guided by Section 18 of the U.S. Housing Act of 1937 and its implementing regulations at 24 CFR 970 (the "Section 18 requirements") and the Uniform Relocation Act (46 U.S.C. § 4600 et seq.) (URA) and California Relocation Assistance Law, Sec 7260 et. seq. of the CA Government Code (CRAL). The Section 18 requirements, URA and CRAL ensure that all households eligible for relocation are provided with direct assistance in locating a decent and safe replacement housing dwelling, are provided significant notice of intent prior to the start of relocation activities, are eligible for reimbursement of related moving expenses, and assisted individually with claims preparation and supplemental services.

Note that pursuant to Public Law 105-117, aliens not lawfully present in the United States are not eligible for relocation assistance, unless such ineligibility would result in exceptional hardship to a qualifying spouse, parent, or child. All persons seeking relocation assistance will be required to certify that they are a United States citizen or national, or an immigrant lawfully present in the United States.



The Housing Authorities are Equal Housing Opportunity Organizations



The purpose of this notice is to inform you that you may be required to relocate for a period of longer than twelve (12) months as a result of the proposed project. Even though you will be provided all of the assistance that Section 18 and CRAL requires, HACE believes that every resident should have the right to reapply for occupancy once this project is complete. For this reason, after project completion, as a resident of Green Phase, HACE intends to provide your household with a right to return as new units are built. If you are in good standing under your lease, you will be able to lease and occupy a unit when the construction is complete. In the meantime, you should continue to pay your rent and meet any other requirements specified in your lease. If you fail to do so, HACE may have cause for your eviction. If you choose to move, or if you are evicted, prior to receiving a formal notice of relocation eligibility, you may become ineligible to receive relocation assistance. It is very important for you to contact us before making any moving plans.

Again, this is not a notice to vacate the premises and does not establish your eligibility for relocation assistance at this time. If you are determined to be displaced and are required to vacate the premises in the future, you will be informed in writing. In the event the proposed project does not proceed or if you are determined not to be displaced, you will also be notified in writing.

We are certain you will have many questions and we look forward to meeting with you. Your interview with our relocation representatives is extremely important. Please call their office directly to set a convenient time for the interview. If they do not hear from you, they will personally contact you via phone number that we have on file for you or at your unit when they are conducting in-person meetings, anticipated for the week of March 12th and March 16th. The LACAL toll-free office number is **(800) 345-5520**.

Sincerely,

Cheryl Churchill, Executive Director
HACE and HACH

Tenant Acknowledgement	
<i>This notice is to inform you of your rights under Federal and State law. If HACE and Brinshore proceed with the New Construction Project and you are relocated for the Project, you may be eligible for relocation assistance under Section 18 of the U.S. Housing Act of 1937, as amended; the Uniform Relocation Act (46 U.S.C. § 4600 et seq.) (URA); the California Relocation Assistance Law (Sec 7260 et seq.) of the CA Government Code; and Handbook 1378 of the US Department of Housing and Urban Development (HUD). All residents are expected to adhere to the terms and conditions of their Lease and House Rules in order to qualify for relocation assistance.</i>	
I was personally contacted by HACE representative, and I have been given a copy of this notice.	
Received by:	Delivered date/by: 3/9/2026 by HACE staff
Claimant signature:	Posted on/by:
Date:	Mailed on/Receipt received:

NOTE: This is your copy of the notice; LACAL will obtain signatures for the relocation file at their personal meeting with you.



The Housing Authorities are Equal Housing Opportunity Organizations



Notice of Eligibility

May 15, 2026

“Tenant Name” and All Other Occupants
3230 Hiler St
Eureka, CA 95503

Dear “Tenant Name” and All Other Occupants:

The **Housing Authority of the City of Eureka (HACE)** in partnership with **Brinshore Development L.L.C. (Brinshore)** is proceeding with the substantial rehabilitation project known as the **Green Phase (Project)**. To carry out this project, it will be necessary for you to permanently relocate from your dwelling at **3230 Hiler Street, Eureka, California** to another affordable apartment within HACE portfolio or a suitable market rent apartment with Tenant Based Section 8 Voucher.

You will not be required to move without at least 90 days’ advance written notice of the day by which you must vacate. However, you can contact us at any time for assistance with your move and to receive the benefits for which you are eligible.

This is a notice of eligibility for relocation assistance. The effective date of your eligibility, known as the initiation of negotiations, is **January 12, 2023**. You are eligible for relocation assistance and benefits under the HACE’s Relocation Assistance Program.

You are eligible to receive the following benefits:

1. **RELOCATION ADVISORY ASSISTANCE** provided by LACAL Consulting, Inc., a professional firm hired by HACE/Brinshore to provide relocation assistance to you, such as notices, assistance with move to replacement housing and help with filing for benefits.
2. **MOVING EXPENSES:** You will receive a payment to assist in moving your personal property. You may select one of the following payments:
 - A. A Fixed Moving Payment based on the number of rooms you occupy. Your entitlement under this option for **three (3)** rooms is **\$1,250.00; or**
 - B. A payment for your Actual Reasonable Moving and Related Expenses based on at least two written estimates and receipted bills.
3. **REPLACEMENT HOUSING ASSISTANCE:** You may receive the following financial assistance to purchase or to rent replacement housing:
 - A. If you RENT replacement housing, you may file a claim for a **RENTAL ASSISTANCE** payment, equal to the difference between the monthly rent and utilities necessary to rent a comparable replacement dwelling (as determined by HACE) and the base monthly rent, multiplied by 42 months. (See table following)

A study was completed to determine the cost of a comparable, ‘decent, safe and sanitary or DS&S’ replacement dwelling most nearly representative of your current dwelling. The

study indicated that the 1-bedroom apartment located at _____, **Apartment C, Eureka, California** with a monthly rent and estimated utilities of **\$1,200.00** was the most representative of your current dwelling. Your HACH provided Tenant Based Section 8 Voucher will cover monthly rent of \$1,032.00 and estimated utilities.

Base monthly rent is defined as the lesser of:

- (1) **\$1,032.00**, which represents the average monthly rent and average monthly utilities at your displacement dwelling or Section 8 Tenant Voucher rent (if you are paying little or no rent, the amount is based on the economic rental value of your dwelling); **or**
- (2) **N/A**, which represents thirty (30) percent of your adjusted gross monthly household income. (If “N/A”, income was not used in the calculation because the income information provided was insufficient evidence of income.)

Based on the above, your base monthly rent amount is **\$1,032.00**, and your maximum rental assistance payment is calculated as follows:

Maximum Rental Assistance Payment Calculation		
1	Comparable Dwelling Cost	\$1,200.00
2	Base Monthly Rent	\$1,032.00
3	Monthly Difference (Line 1 minus Line 2)	\$168.00
4	Maximum payment (Line 3 times 42 months)	\$7,056.00

Your actual payment depends on the cost of the replacement dwelling you decide to rent. If you rent and occupy a replacement dwelling that rents for **less** than the comparable dwelling, your rental assistance payment will be based on the actual cost of your replacement dwelling. If you rent and occupy a replacement dwelling that rents for **more** than the comparable dwelling, your rental assistance payment will be limited by the cost of the comparable dwelling.

B. If you BUY replacement housing, you may file a claim for **DOWNPAYMENT ASSISTANCE** payment. You may then use the full amount of your rental assistance payment, as calculated above based on comparable cost (**\$7,056.00**), for a down payment and incidental expenses (typically known as “closing costs”) associated with the purchase of a replacement dwelling. All amounts used as a down-payment and incidental expenses must be applied to the purchase of the replacement dwelling. Any payments you may have received as rental assistance will be deducted from your down payment assistance. Let us know if you prefer to buy a replacement home, and we will help you find such housing.

To be eligible for a replacement housing payment described above, you must rent or purchase and occupy a decent, safe and sanitary replacement dwelling **within 12 months**, as well as file claims for replacement housing or moving payments **within 18 months** from the date you move from your displacement dwelling. **Failure to occupy the replacement dwelling or to submit claims within the above time limits could result in loss of moving and/or replacement housing benefits.**

You do not have to accept any dwelling referred to you by the Property Owner. You may choose your own replacement, but to qualify for relocation assistance payments it must first be inspected to assure that it meets the “decent, safe and sanitary-DS&S” standards. For this reason, **DO NOT MOVE from your home and DO NOT CONTRACT to rent or purchase a replacement dwelling without first contacting your**

relocation consultant. The “decent, safe and sanitary-DS&S” inspection is **not** a substitute for a professional housing inspection.

You must continue to pay your rent to HACE for the period of your tenancy, as well as meet all other conditions stated in your lease or rental agreement. Failure to pay rent may reduce the replacement housing payment which you are eligible to receive.

The Relocation Assistance Program is very complex. It is important that you carefully read and understand the matters explained in this notice and in the Informational Statement which is provided to you. Any person aggrieved by a determination as to eligibility for, or the amount of, a payment authorized by HACE’s Relocation Assistance Program may have the appeal application reviewed by HACE in accordance with its appeals procedure.

If at any time you have questions or need assistance, please contact me at 800-345-5520 ext 1001.

Sincerely,



Natasa Lenic, SR/WA, R/W-RAC
Relocation Director
LACAL Consulting, Inc.
6728 Fair Oaks Blvd., Suite 400C
Carmichael, CA 95608
Phone: 800-345-5520 ext. 1001

Tenant Acknowledgement – I was personally contacted by the Relocation Consultant for HACE/Brinshore. I have been given a copy of this notice and I have had the available services and entitlements explained to me. I have been advised that the Relocation Consultant will be available to assist me if any questions arise or assistance is needed.	
Received by:	Delivered date/by:
Claimant signature:	Posted on/by:
Date:	Mailed on/Receipt received:

90-Day Notice to Vacate

May 31, 2026

“Tenant Name” and All Other Occupants
3230 Hiler St
Eureka, CA 95503

Dear [Tenant Name] and All Other Occupants:

The Housing Authority of the City of Eureka (HACE) in partnership with Brinshore Development L.L.C. (Brinshore) (called here the “Displacing Agency”) as the owner of the property which you occupy located at **3230 Hiler Street, in Eureka, CA** (called here the “Premises”), provided you with a Notice of Eligibility with referrals to units you may want to consider for a replacement site. The Displacing Agency has now determined that it will be necessary for you to vacate the Premises.

Notice is hereby given that the Displacing Agency elects to terminate your tenancy in ninety (90) days beginning June 1, 2026 and ending August 30, 2026. You are hereby noticed to quit and deliver up possession of the property you occupy on or before August 30, 2026. If you do not vacate the Premises by that date, the Displacing Agency will initiate legal proceedings to recover possession of the Premises, along with any rents and damages.

During this period, **LACAL Consulting** relocation staff will continue to be available to provide assistance with referrals to replacement sites, coordination with movers and other vendors, the processing of relocation benefit claim forms, and other tasks to help facilitate your relocation. Please contact your relocation consultant, _____ at (323) 951-9887 ext. 1002, if you have any questions regarding this notice or the relocation process. Please contact your consultant prior to signing a lease as the unit you select must be inspected to meet Decent, Safe and Sanitary conditions.

Upon vacating your unit, you are responsible for removing all of your personal property, delivering the Premises in satisfactory condition and turning in the keys to your relocation consultant on the day you schedule your consultant to perform a final abandonment walk-thru of your current unit.

Sincerely,

Natasa Lenic, SR/WA, R/W-RAC
LACAL Consulting, Inc.
6728 Fair Oaks Blvd., Suite 400C
Carmichael, CA 95608

Received by:	Delivered date/by:
Claimant signature:	Posted on/by:
Date:	Mailed on/Receipt received:

30-Day Relocation Plan Review Notice

March 31, 2026

[Tenant Name] and All Other Occupants
3230 Hiler St
Eureka, CA 95503

Dear [Tenant Name] and All Other Occupants:

The Housing Authority of the City of Eureka (HACE) in partnership with Brinshore Development L.L.C. (Brinshore) want to inform you that the Relocation Plan for HACE Redevelopment - Green Phase is available for review and comments now, and over the next 30 days, at the following locations:

- 1) Housing Authority of the City of Eureka and County of Humboldt, 735 W Everding St, Eureka, CA 95503 at the reception desk (during regular office hours)
- 2) Humboldt County Library - Eureka Main Branch, 1313 3rd St, Eureka, CA 95501 (during regular library opening hours)
- 3) Electronically by requesting a copy via email: nLenic@lacalconsulting.com

The public is encouraged to provide comments during this 30-day review period (April 1, 2026 to May 1, 2026). Citizen and tenant participation is encouraged as part of this process; members of the community are invited to voice their concerns and provide input on the contents of the Relocation Plan by responding during this review period. To receive a copy of the Plan, submit comments, and ask questions about the proposed project, contact:

Natasa Lenic, SR/WA, R/W-RAC
LACAL Consulting, Inc.
6728 Fair Oaks Blvd., Suite 400C
Carmichael, CA 95608
(323) 951-9887
nLenic@lacalconsulting.com

Received by:	Delivered date/by:
Claimant signature:	Posted on/by:
Date:	Mailed on/Receipt received:

Appendix F

Relocation Budget

Phase	Bedroom Size	Annual Income	Family Size	Dependents	Monthly							
					HACE unit /TPV	Market Unit	Need	Permanent off-site with TPV - RAP	Sec deposit	Moving	Total	
Green	3	\$ 10,200.00	3	2	\$ 2,285.00	\$ 2,150.00	\$ -	\$ -	\$ 2,150.00	\$ 1,790.00	\$ 3,940.00	
Green	2	\$ 12,240.00	2	1	\$ 1,643.00	\$ 1,550.00	\$ -	\$ -	\$ 1,550.00	\$ 1,475.00	\$ 3,025.00	
Green	2	\$ 10,200.00	2	1	\$ 1,643.00	\$ 1,550.00	\$ -	\$ -	\$ 1,550.00	\$ 1,475.00	\$ 3,025.00	
Green	1	\$ 18,732.00	1	0	\$ 1,257.00	\$ 1,200.00	\$ -	\$ -	\$ 1,200.00	\$ 1,250.00	\$ 2,450.00	
Green	1	\$ 14,148.00	1	0	\$ 1,257.00	\$ 1,200.00	\$ -	\$ -	\$ 1,200.00	\$ 1,250.00	\$ 2,450.00	
Green	1	\$ 29,220.00	2	0	\$ 1,643.00	\$ 1,550.00	\$ -	\$ -	\$ 1,550.00	\$ 1,250.00	\$ 2,800.00	
Green	3	\$ 9,385.00	2	1	\$ 2,285.00	\$ 2,150.00	\$ -	\$ -	\$ 2,150.00	\$ 1,790.00	\$ 3,940.00	
											\$ 21,630.00	
											+10% contingency \$ 23,793.00	

Appendix G

Public Review and Comments

This Relocation Plan was made available for public review between April 9, 2026 and May 9, 2026. No public comments were received during the public review period.

HACE Executive Director reviewed the relocation plan and found it consistent with local housing element.